

Local Insight profile for 'Farley Hill' area

LI - Local Trust (Big Local)

Report created 31 July 2019





Introduction Page 3 for an introduction to this report

 Population	<p>There are 12,175 people living in Farley Hill</p> <p>See pages 4-9 for more information on population by age and gender, ethnicity, country of birth, language, migration, household composition and religion</p>	Education & skills	<p>29% of people have no qualifications in Farley Hill compared with 18% across Milton Keynes</p> <p>See pages 46-48 for more information on qualifications, pupil attainment and early years educational progress</p>
 Vulnerable groups	<p>24% of children are living in poverty in Farley Hill compared with 15% across Milton Keynes</p> <p>See pages 10-23 for more information on children in poverty, people out of work, people in deprived areas, disability, pensioners and other vulnerable groups</p>	Economy	<p>36% people aged 16-74 are in full-time employment in Farley Hill compared with 46% across Milton Keynes</p> <p>See pages 49-55 for more information on people's jobs, job opportunities, income and local businesses</p>
 Housing	<p>2% of households lack central heating in Farley Hill compared with 1% across Milton Keynes</p> <p>See pages 24-33 for more information on dwelling types, housing tenure, affordability, overcrowding, age of dwelling and communal establishments</p>	Access & transport	<p>36% of households have no car in Farley Hill compared with 19% across Milton Keynes</p> <p>See pages 56-58 for more information on transport, distances services and digital services</p>
 Crime & safety	<p>The overall crime rate is higher than the average across Milton Keynes</p> <p>See pages 34-35 for more information on recorded crime and crime rates</p>	 Communities & environment	<p>The % of people 'satisfied with their neighbourhood' (72.4%) is lower than the average across Milton Keynes (82.7%)</p> <p>See pages 59-65 for more information on neighbourhood satisfaction, the types of neighbourhoods locally, local participation and the environment, air pollution</p>
Health & wellbeing	<p>17% of people have a limiting long-term illness in Farley Hill compared with 14% across Milton Keynes</p> <p>See pages 36-45 for more information on limited long-term illness, life expectancy and mortality, general health and healthy lifestyles</p>	 Appendix A	<p>Page 66 for information on the geographies used in this report, publication dates for new indicators and acknowledgements.</p>

Oxford Consultants for Social Inclusion (OCSI), www.ocsi.co.uk / 01273 810 270. ©OCSI 2019.

This report, or any part, may be reproduced in any format or medium, provided that is reproduced accurately and not used in a misleading context. The source must be identified and the title of the publication specified with the copyright status acknowledged

Local Insight for LI - Local Trust (Big Local)

Local Insight gives you access to interactive maps and reports at small area level. These reports show key social and economic indicators and allow you to compare the area selected to comparator areas.

OCSI

Local Insight is a tool developed by Oxford Consultants for Social Inclusion (OCSI) based on a project developed jointly between OCSI and HACT.

OCSI develop and interpret the evidence base to help the public and community organisations deliver better services. A 'spin-out' from the University of Oxford Social Policy Institute, OCSI have worked with more than 100 public and community sector clients at local, national and international level. See www.ocsi.co.uk for more.

About the indicators

Information published by government as open data – appropriately visualised, analysed and interpreted – is a critical tool for Local Authorities.

OCSI collect all local data published by more than 50 government agencies, and have identified key indicators relevant to local authorities to use in this report and the interactive webtool (local.communityinsight.org).

How we have identified the “Farley Hill” area

This report is based on the definition of the “Farley Hill” area created by LI - Local Trust (Big Local), (you can view this area on the Local Insight map, through finding the area on the ‘show services’ dropdown in the top left hand corner of the map). We have aggregated data for all the neighbourhoods in “Farley Hill” to create the charts and tables used in this report.

Alongside data for the “Farley Hill”, we also show data for selected comparator areas: South East and Milton Keynes.



What information is shown here?

The information on this page shows the number of people living in Farley Hill. These population figures provide detail of the structure of the population by broad age bands and sex.

The first information box shows the total number of people usually resident in the area, with the male female breakdown. Also shown are numbers by age, and the 'dependency ratio'. This is the ratio of non-working age (those aged 0-15 and over 65) to working age population and is useful in understanding the pressure on a productive population in providing for the costs of services and benefits used by the youngest and oldest in a population. For example, a ratio of 25% would imply one person of non-working age for every four people of working age.

The population pyramid compares the proportion of males and females by five year age bands. The line chart shows how the population is changing over time in Farley Hill and comparator areas. The stacked bar chart, below, shows the age breakdown of the population in Farley Hill and comparator areas by broad age band.

Total Population	Aged 0-15	Working age population	Aged 65+	Dependency ratio
12,175	3,120	7,805	1,250	0.56

Source: Mid-Year Estimates (ONS) 2017

Figure: Population estimates by 5 year age band
Source: Mid-Year Estimates (ONS) 2017

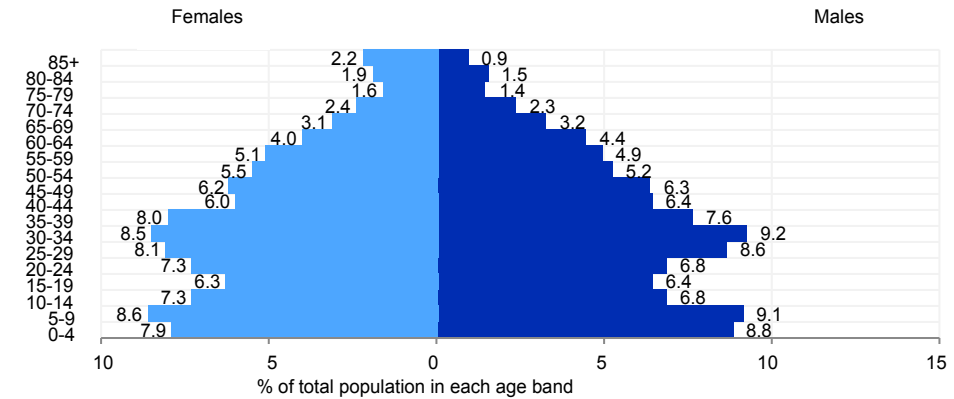
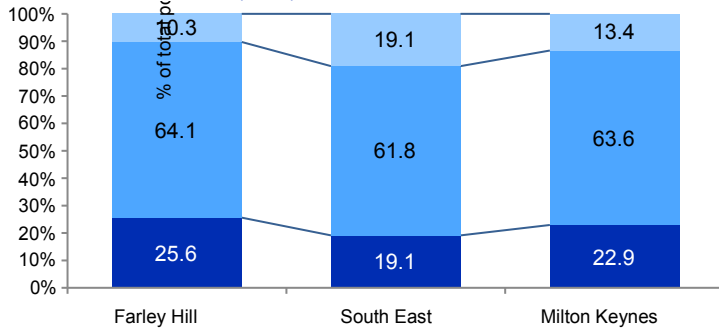


Figure: % change in total population from 2001-2017
Source: Mid-Year Estimates (ONS)

Figure: Population by age
Source: Mid-Year Estimates (ONS) 2017





What information is shown here?

The information on the right shows the number of people in Farley Hill by ethnicity, based on each person's perceived ethnic group and cultural background.

The information boxes display the number of people who have identified themselves as White British and the number from non-White ethnic minority groups, as well as the five broad ethnic minority groups (White non-British, Mixed, Asian, Black and other ethnic group).

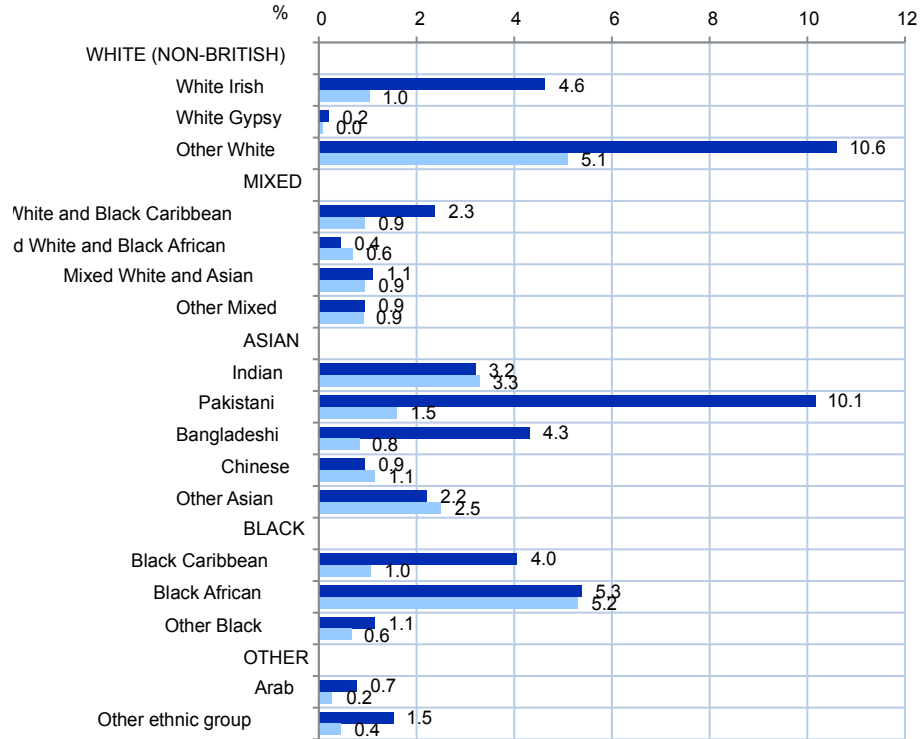
The final information box shows the proportion of households where not all household members are of the same ethnicity (households with multiple ethnic groups).

The bar chart on the right shows a detailed breakdown of the percentage of people in ethnic minority groups by ethnic category.

White British	Non-White	White-non-British	Mixed
5,210	4,245	1,710	525
Asian	Black	Other ethnic group	Households with multiple ethnicities
2,305	1,170	245	780

Source: Census 2011

Figure: Population by ethnic group (excluding White British)
Source: Census 2011





What information is shown here?

The information on the right shows the number of people in Farley Hill by country of birth.

The top row information boxes display the number of people in Farley Hill who were born in England and outside the UK as well as the number of people with a UK passport and non-UK passport.

The second row information boxes show the language breakdown of households, identifying the number of households in Farley Hill with one or more members who cannot speak English.

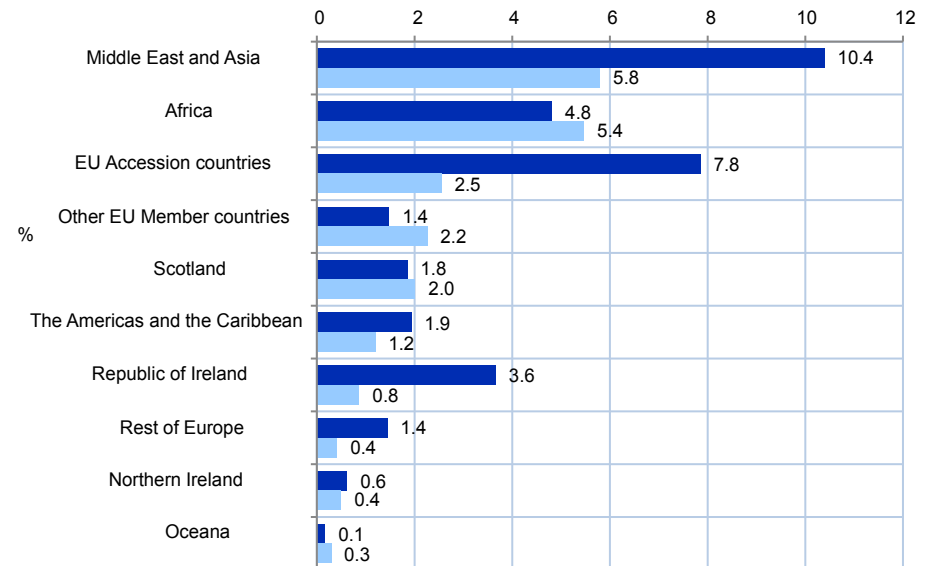
The bar chart on the right shows a detailed breakdown of the percentage of people in Farley Hill born outside of England by the geographic region of birth.

Born in England	Born Outside the UK	With a UK passport	With a non-UK passport
7,340	3,505	7,005	2,445
All people in households have English as main language	At least one adult (not all) has English as main language	No adults but some children have English as main language	No household members have English as main language
3,175	390	90	470

Source: Census 2011

Figure: Population born outside England

Source: Census 2011





What information is shown here?

The information box shows the number and percentage of migrants in Farley Hill and across England as a whole. A migrant is defined as a person with a different address one year before Census day. The migrant status for children aged under one in households is determined by the migrant status of their 'next of kin' (defined as in order of preference, mother, father, sibling (with nearest age), other related person, Household Reference Person).

The chart on the right shows the population turnover rate by age band. This is calculated as the rate of in or out migratory moves within England and Wales per 1,000 resident population.¹ Figures are based on GP patient register records. The left-hand bars (lighter colour) show people moving *out of* the area – higher values for a particular group indicate that this age-group is more likely to move away from the area. The right-hand bars (darker colour) show people moving *into* the area – higher values for a particular group indicate that this age-group is more likely to move into the area.

The data table on the top right and the chart on the bottom right show the total number of people registering with a National Insurance number who have come from overseas. This is a measure of the number of people who have migrated to the UK from overseas to work, who have registered for a National Insurance number in the local area.

People who have moved address within the last 12 months (Census 2011)	Overseas migrants (National Insurance no. registrations of overseas nationals) (DWP 2018/19)
1,525	325

Figure: Level of inward and outward migration (by age)
Source: Population Turnover Rates – Office for National Statistics (2010)

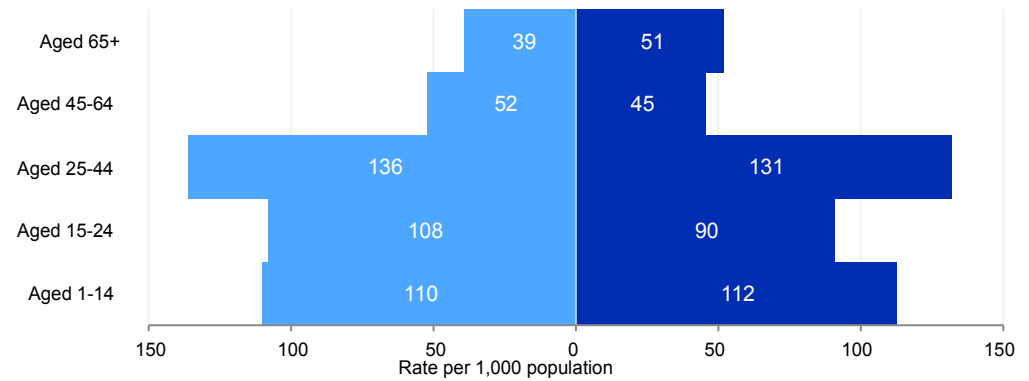
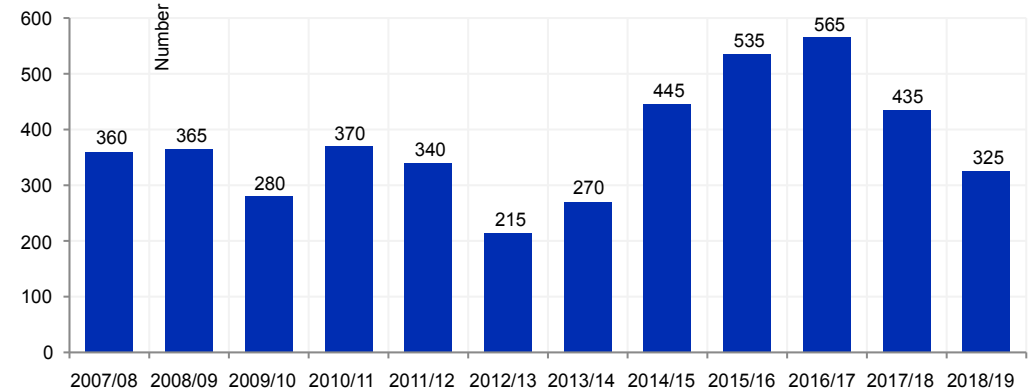


Figure: Number of overseas nationals registering with a National Insurance Number
Source: National Insurance No. registrations – Department for Work and Pensions (2018/19)



¹ Please note that there are currently no planned updates for this dataset, however we still consider it to be relevant.



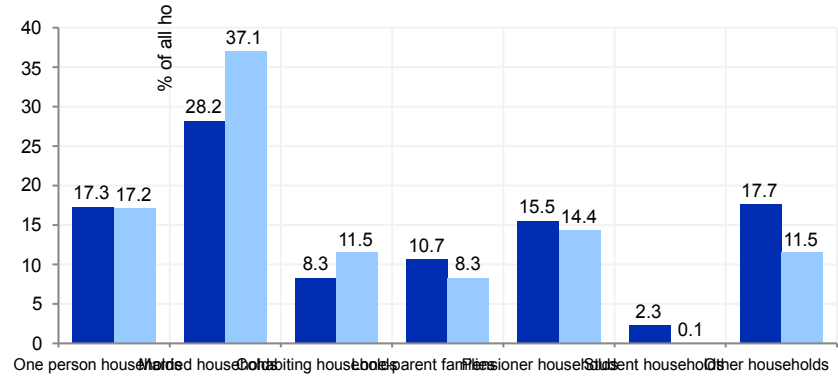
What information is shown here?

The information on this page shows the composition of household types in Farley Hill. The information boxes contain the number of households in Farley Hill classified under the main household composition breakdowns. The chart shows the same information as a percentage of all households.

Pensioner households	One person households (aged under 65)	Lone parent families with dependent children
640	715	440
Married households	Cohabiting households	Student households
1,165	340	95

Source: Census 2011

Figure: Population by household composition
Source: Census 2011





What information is shown here?

The information on the right shows the number of people living in Farley Hill by religious belief, categorised by the six major religions, other religion and no religion.

The bar chart shows the percentage of people in Farley Hill and comparator areas who are of non-Christian religious belief, displayed by religion.

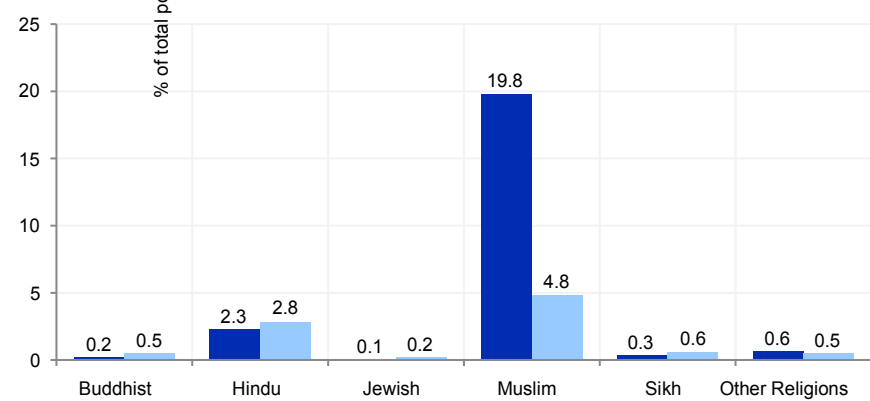
Note, figures in the table and charts may not add up to 100% because they do not include figures for those for who did not reply to the religion question – who were recorded as 'religion not stated' in the census data publication.

Christian	Buddhist	Hindu	Jewish
5,905	25	255	5
Muslim	Sikh	Other religion	No religion
2,205	40	70	1,990

Source: Census 2011

Figure: Population with non-Christian religion

Source: Census 2011





10 Vulnerable groups: People out of work (1)

What information is shown here?

The information in this section shows counts of people who are out of work and receiving workless benefits: Jobseekers Allowance (JSA)/Universal Credit (UC) and Incapacity Benefit (IB)/Employment and Support Allowance (ESA).

JSA is payable to people under pensionable age who are available for, and actively seeking, work of at least 40 hours a week. A subset of UC claimants (claimants in the 'searching for work' conditionality group) are additionally included in the 'Unemployment Benefit' count, as UC is slowly replacing JSA for new claims. *Note, 'the searching for work' conditionality group includes a small number of claimants who would not be considered unemployed under the previous JSA benefits regime e.g. those with work limiting illness awaiting health checks. Therefore, there is likely to be a slight overcount of the proportion of Unemployed Benefit claimants in areas where the UC rollout is more advanced.*

IB and ESA are workless benefits payable to people who are out of work and have been assessed as being incapable of work due to illness or disability and who meet the appropriate contribution conditions. *Note, since March 2016, ESA is being replaced by UC for new claimants. It is not possible to capture the total number of claimants of sickness benefits as the UC does not provide a breakdown for health condition; therefore, the total count of ESA/IB claimants presented here is likely to be an underestimate of the full count of those workless and receiving benefits due to sickness or disability.*

The information boxes on the top right show: the total number of adults (aged 16-64) receiving JSA and UC; the total claiming for more than 12 months; claimants aged 18-24 and 50+, the number of people receiving 'Incapacity benefits' (IB or ESA); and the number and proportion of 16-64 year olds receiving workless benefits (UC, JSA, IB or ESA).

Unemployment Benefit (JSA and UC) claimants (June-19)	JSA claimants claiming for more than 12 months (June-19)	Youth unemployment (JSA/UC) claimants aged 18-24 (June-19)	Older unemployed (JSA/UC claimants aged 50+) (June-19)
240	35	40	85
Male unemployment claimants (JSA and UC) (June-19)	Female unemployment claimants (JSA and UC) (June-19)	Working age workless benefit claimants * (Nov-18)	Incapacity benefits claimants (Nov-18)
125	115	785	630

Source: Department for Work and Pensions

* 'Working age workless benefit claimants' is a combination of 'Unemployment benefit claimants (JSA and Universal Credit)' + and 'Incapacity benefits claimants (IB/ESA)'

Figure: Unemployment benefit (Jobseekers Allowance/Universal Credit) claimants
Source: Department for Work and Pensions



The line charts below show month on month changes in the proportion of people claiming IB or ESA and the proportion claiming JSA or UC in the searching for work conditionality group across Farley Hill and comparator areas.

Figure: % of Jobseekers Allowance claimants claiming for more than 12 months
Source: Department for Work and Pensions (June-19)

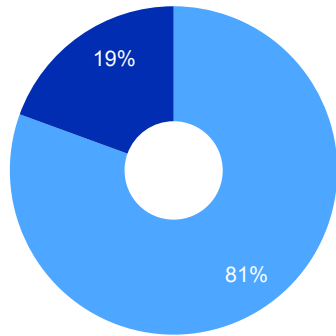


Figure: Working age population (16-64) claiming incapacity benefits (Employment Support Allowance and Incapacity Benefit)
Source: Department for Work and Pensions

Figure: Workless benefit claimants aged 16-24 and 16-64
Source: Jobseekers Allowance/Universal Credit/Incapacity benefits/Employment and Support Allowance – Department for Work and Pensions (Nov-18)

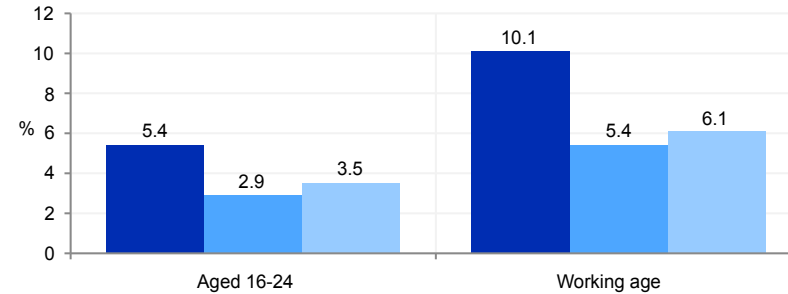


Figure: 16-24 year olds receiving 'Workless' benefits (Incapacity Benefit, Employment Support Allowance, Jobseekers Allowance and Universal Credit)
Source: Department for Work and Pensions



What information is shown here?

The information in this section looks at the prevalence of disability among people living in Farley Hill. There are three measures of disability presented: those claiming Attendance Allowance, Personal Independence Payments and Disability Living Allowance.

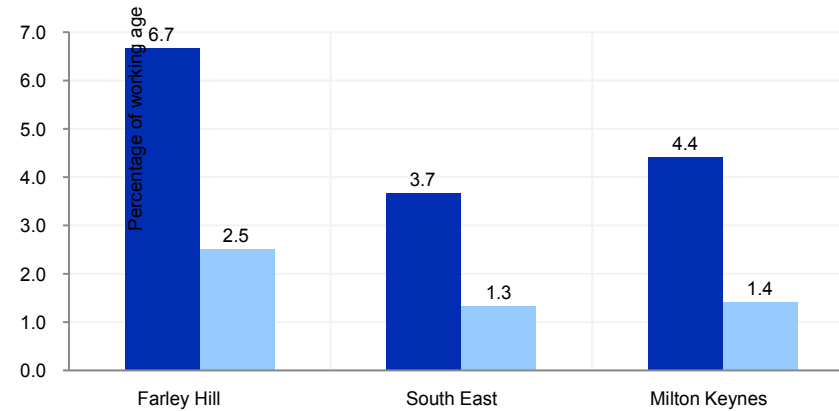
Attendance Allowance is payable to people over the age of 65 who are so severely disabled, physically or mentally, that they need a great deal of help with personal care or supervision.

Until April 2013, Disability Living Allowance was payable to children and adults in or out of work who are below the age of 65 and who were disabled, and required help with personal care or had walking difficulties. It is a non-means tested benefit, which means it is not affected by income. From April 2013 Personal Independence Payments (PIP) have been introduced to replace Disability Living Allowance for all new claimants. PIP helps with some of the extra costs caused by long-term disability, ill-health or terminal ill-health.

The information boxes on the right show the total number of people receiving Attendance Allowance, Disability Living Allowance and PIP (by key breakdown) across Farley Hill.

Attendance Allowance claimants (Nov-18)	Personal Independence Payment (PIP) (Apr-19)	PIP Males (Apr-19)
230	520	240
PIP Females (Apr-19)	PIP with mental health conditions (Apr-19)	Disability Living Allowance claimants (Nov-18)
295	195	395

Figure: Personal Independence Payment (PIP) recipients
Source: Department for Work and Pensions (Apr-19)





What information is shown here?

The information in this page shows the proportion of people in receipt of Universal Credit against six levels of conditionality. Conditionality refers to work-related activities an eligible adult will have to do in order to get full entitlement to Universal Credit.

- **Searching for work:** Claimants who are not working, or with very low earnings. The claimant is required to take action to secure work - or more / better paid work. The Work Coach supports them to plan their work search and preparation activity.
- **Working with requirements:** Claimants who are in work but could

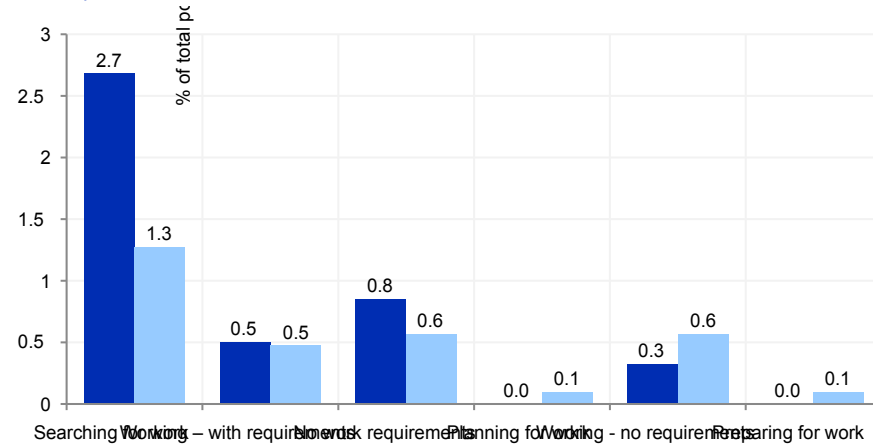
Universal Credit claimants: Searching for work (June-19)	Universal Credit claimants: Working with requirements (June-19)	Universal Credit claimants: No work requirements (June-19)
210	40	65
Universal Credit claimants: Planning for work (June-19)	Universal Credit claimants: Working no requirements (June-19)	Universal Credit claimants: Preparing for work (June-19)
0	25	0
Source: Department for Work and Pensions (DWP)		



earn more, or not working but has a partner with low earnings.

- **No work requirements:** Claimants who are not expected to work at present. Health or caring responsibility prevents claimant from working or preparing for work.
- **Planning for work:** Claimants who are expected to work in the future. Lone parent / lead carer of child aged 1 (Aged 1 - 2, prior to April 2017). The claimant is required to attend periodic interviews to plan for their return to work.
- **Working no requirements:** Claimants whose individual or household earnings is over the level at which conditionality applies. Required to inform DWP of changes of circumstances, particularly if at risk of decreasing earnings or losing job.
- **Preparing for work:** Claimants who are expected to start preparing for future even with limited capability for work at the present time or a child aged 2 (Aged 3 - 4, prior to April 2017), the claimant is expected to take reasonable steps to prepare for work including Work Focused Interview.

Figure: Working age population claiming Universal Credit by conditionality breakdown
Source: Department for Work and Pensions





What information is shown here?

The information in this page shows the number of people in receipt of key welfare benefits payable by the Department for Work and Pensions (DWP).

Working age DWP Benefits are benefits payable to all people of working age (16-64) who need additional financial support due to low income, worklessness, poor health, caring responsibilities, bereavement or disability.

Housing Benefit (HB) can be claimed by a person if they are liable to pay rent and if they are on a low income and provides a measure of the number of households in poverty.

Income Support is a measure of people of working age with low incomes and is a means tested benefit payable to people aged over 16 working less than 16 hours a week and having less money coming in than the law says they need to live on.

Universal Credit (UC) has started to replace these legacy benefits for new claimants. The UC rollout began in April 2013, with single jobseeker's moving on to the new benefit and by March 2016 the rollout intensified to include other groups who are out of work or on low incomes.

The chart on the right shows the change in the proportion of working age people receiving DWP benefits. The charts on the following page show the change in the proportion of Income Support and Housing Benefits claimants and the age breakdown of DWP benefit claimants across Farley Hill and comparator areas. *Note, recent changes observed in these charts can be partially attributed to the migration of claimants from legacy working age DWP benefits, Housing Benefit and Income Support towards Universal Credit.*

Working age DWP Benefit claimants (Nov-16)	Female working age benefit claimants (Nov-16)	Male working age benefit claimants (Nov-16)
1,205	695	505

Income Support (IS) claimants (Nov-18)	Housing Benefit claimants (Feb-19)	Universal Credit claimants (June-19)
165	1,275	395

Source: Department for Work and Pensions (DWP)

Figure: Working age population claiming DWP benefit claimants (for all DWP benefits)
Source: Department for Work and Pensions

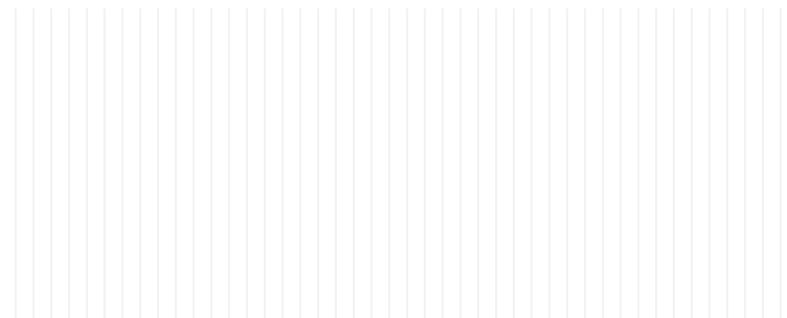




Figure: Income Support claimants

Source: Department for Work and Pensions (Nov-18)

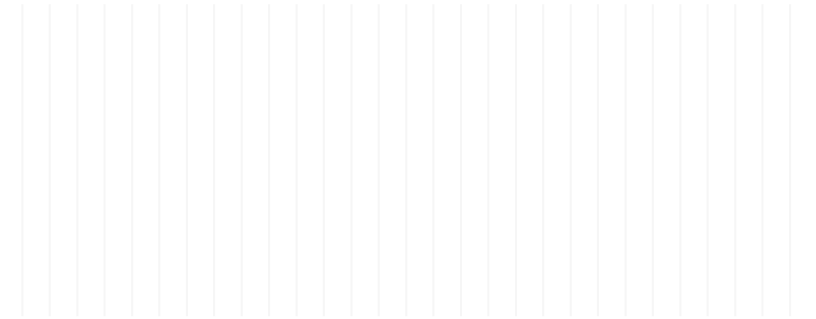


Figure: Housing Benefit claimants

Source: Department for Work and Pensions

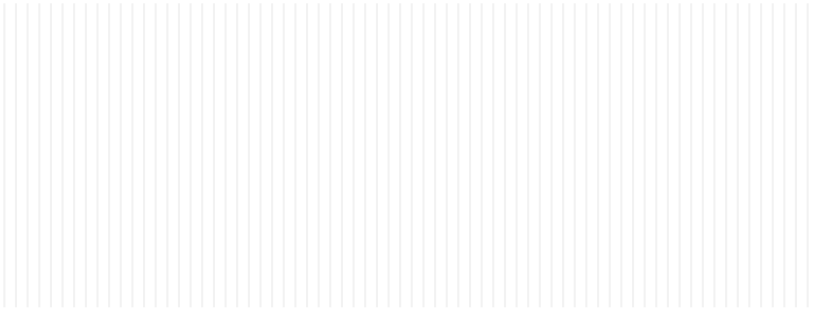


Figure: Age breakdown of working age DWP benefit claimants (for all DWP benefits)

Source: Department for Work and Pensions (Nov-16)

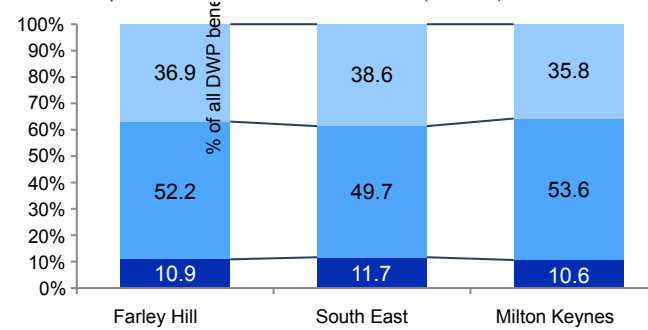
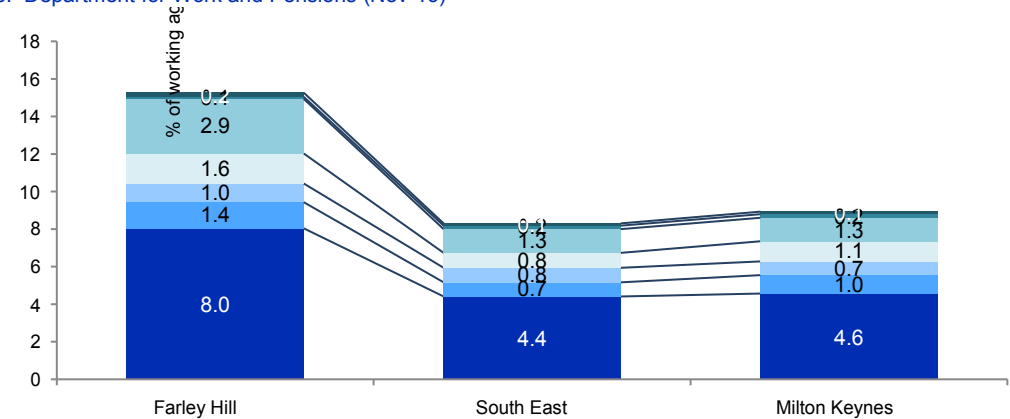


Figure: Breakdown of working age DWP benefit claimants by reason for claim

Source: Department for Work and Pensions (Nov-16)





What information is shown here?

The information on this page looks at overall levels of deprivation across Farley Hill based on the Index of Multiple Deprivation (IMD) 2015. IMD 2015 is the most comprehensive measure of multiple deprivation available. The concept of multiple deprivation upon which the IMD 2015 is based is that separate types of deprivation exist, which are separately recognised and measurable. The IMD 2015 therefore consists of seven types, or domains, of deprivation, each of which contains a number of individual measures, or indicators.²

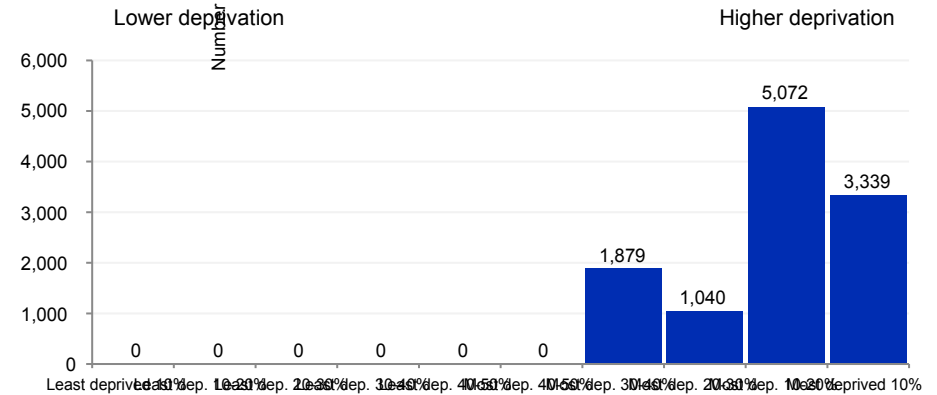
The information boxes on the right show the number of people in Farley Hill living in neighbourhoods ranked among the most deprived 20% of neighbourhoods in England on IMD 2015 and the seven IMD domains. The chart on the right shows the number of people living in neighbourhoods grouped according to level of deprivation. The charts on the following pages show the same information for each of the domains. All neighbourhoods in England are grouped into ten equal sized groups “deciles”; the 10% of neighbourhoods with the highest level of deprivation (as measured in the IMD) are grouped in decile 10, and so on with the 10% of neighbourhoods with the lowest levels of deprivation grouped in decile 1.

Number of people in Farley Hill living in the most deprived 20% of areas of England by Indices of Deprivation (ID) 2015 domain			
Index of Multiple Deprivation	Income domain	Employment domain	Education domain
8,411	6,695	2,880	6,695
Health domain	Barriers to Housing and Services domain	Living Environment domain	Crime domain
5,174	9,451	2,756	9,495

Source: Communities and Local Government (Indices of Deprivation 2015)

Figure: Number of people in each deprivation decile, Index of Multiple Deprivation 2015

Source: Communities and Local Government (Indices of Deprivation 2015)



² The seven domains of deprivation included are: Employment deprivation, Income deprivation, Health deprivation and disability, Education, skills and training deprivation, Crime, Living environment deprivation, Barriers to housing and services.



Figure: Number of people in each deprivation decile, ID 2015 Income domain
Source: Communities and Local Government (Indices of Deprivation 2015)

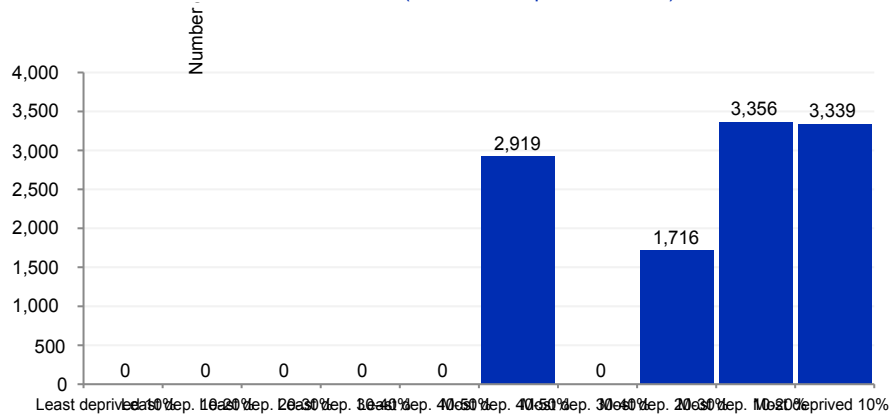


Figure: Number of people in each deprivation decile, ID 2015 Education domain
Source: Communities and Local Government (Indices of Deprivation 2015)

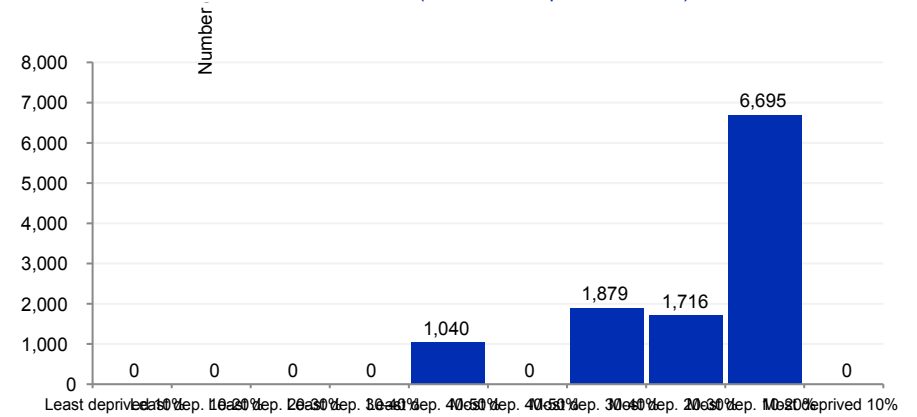


Figure: Number of people in each deprivation decile, ID 2015 Employment domain
Source: Communities and Local Government (Indices of Deprivation 2015)

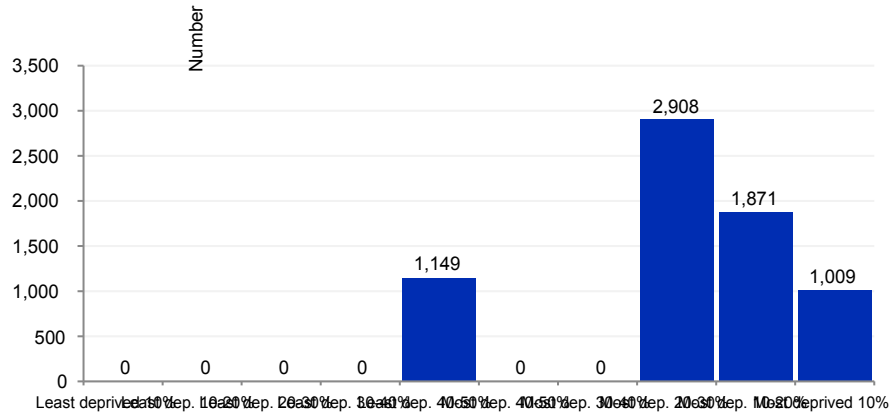


Figure: Number of people in each deprivation decile, ID 2015 Health domain
Source: Communities and Local Government (Indices of Deprivation 2015)

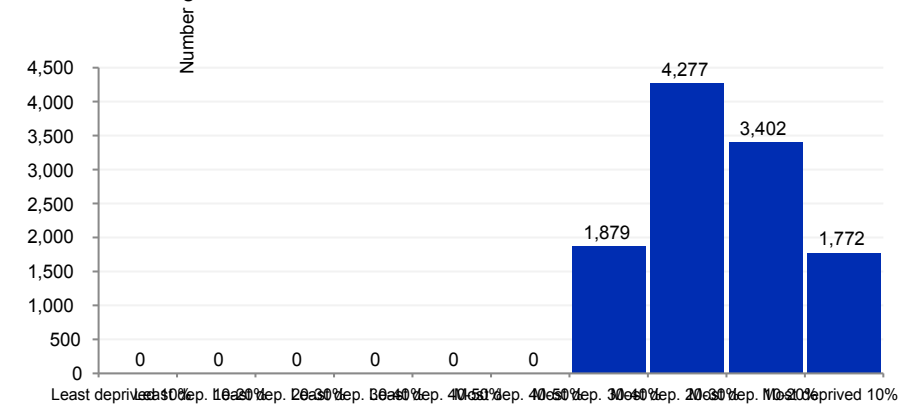




Figure: Number of people in each deprivation decile, ID 2015 Barriers to Housing and Services domain
Source: Communities and Local Government (Indices of Deprivation 2015)

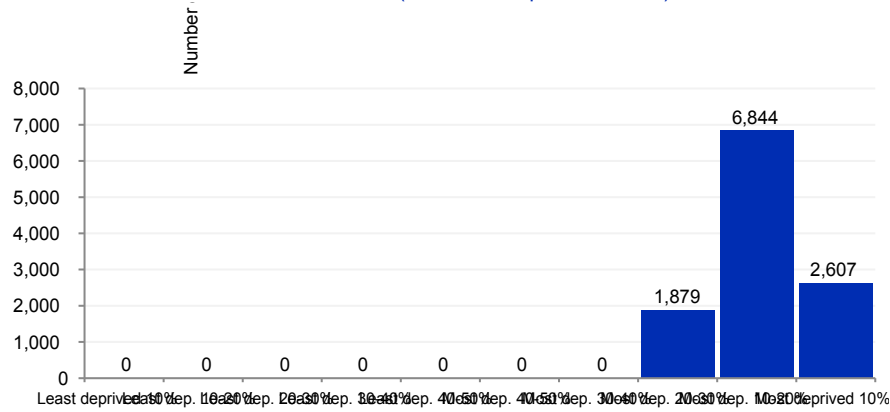


Figure: Number of people in each deprivation decile, ID 2015 Crime domain
Source: Communities and Local Government (Indices of Deprivation 2015)

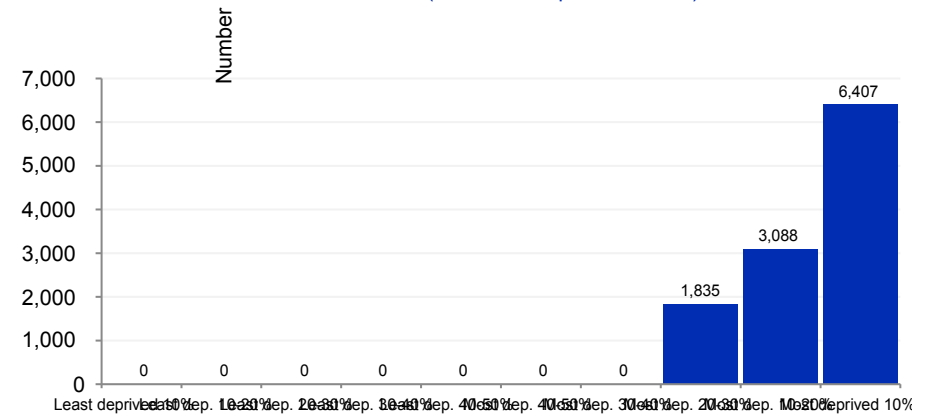
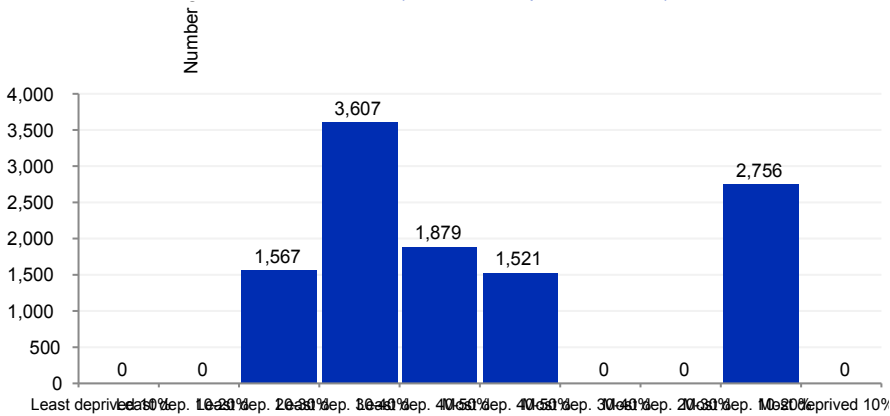


Figure: Number of people in each deprivation decile, ID 2015 Living Environment domain
Source: Communities and Local Government (Indices of Deprivation 2015)





What information is shown here?

This page looks at children in out of work households, children in poverty and children in lone parent households. Children in 'out of work' households, are defined as dependent children living in families where all adults are in receipt of Jobseeker's Allowance, Income Support, Employment and Support Allowance, Incapacity

Children in 'out of work' households (2017)	Children in lone parent households (2012)	Children in poverty (2016)
550	1,125	795
Source: Children in lone parent households - HM Revenue and Customs; Children in 'out of work' households, Children in poverty - Department for Work and Pensions		



Benefit/Severe Disablement Allowance or Pension Credit. This measure includes Universal Credit claimants. The children in poverty measure shows the proportion of children (aged 0-15) in families in receipt of out of work benefits, or in receipt of tax credits where their reported income is less than 60% median income. Out of work means-tested benefits include: Income-Based Jobseekers Allowance, incapacity benefits and Income Support.

The information boxes on the right show the count of people in each of these three categories in Farley Hill. The bar chart shows the percentage of people in each of these categories across Farley Hill and comparator areas (as a percentage of all children receiving Child Benefit). The line chart shows the year on year change in the proportion of children in out of work households.

Figure: Children living in poverty, worklessness and lone parent households

Source: Children in lone parent households - HM Revenue and Customs (2012); Children in 'out of work' households - Department for Work and Pensions (2017); Children in poverty - Department for Work and Pensions (2016)

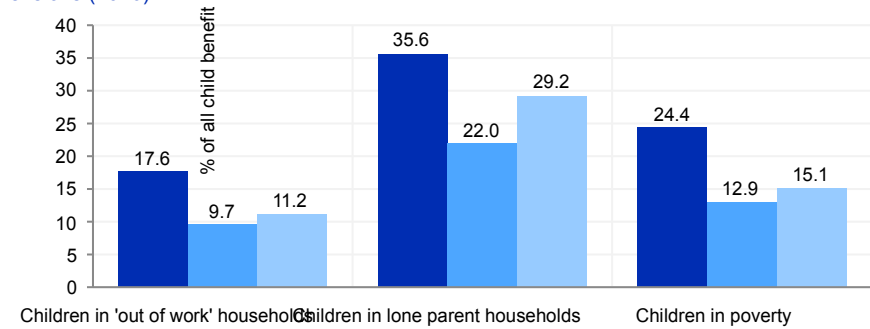
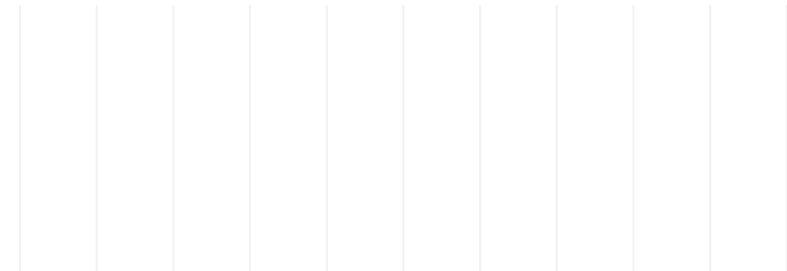


Figure: Children living in poverty

Source: Department for Work and Pensions





What information is shown here?

The information on this page shows levels of child wellbeing across Farley Hill as measured using the Child Wellbeing Index (CWI) from 2009.³ The CWI is a small area index measuring child wellbeing – how children are doing in a number of different aspects of their life. The index covers the major domains of a child’s life that have an impact on child wellbeing and that are available for neighbourhoods in England. The CWI is made up of seven domains.⁴

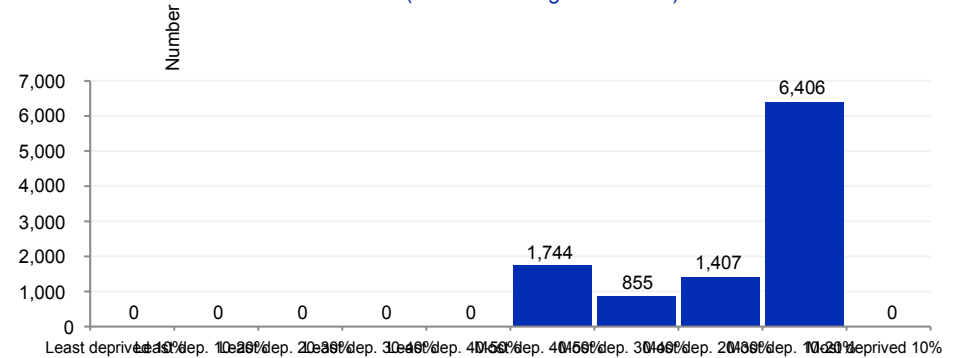
The eight information boxes on the right show the number of people in Farley Hill living in areas ranked among the most deprived 20% of neighbourhoods in England on CWI and the seven domains. The chart on the right shows the number of people living in neighbourhoods grouped according to level of child wellbeing deprivation. All neighbourhoods in England are grouped into ten equal sized groups “deciles”; the 10% of neighbourhoods with the highest level of deprivation (lowest level of child wellbeing) are grouped in decile 10, and so on with the 10% of neighbourhoods with the lowest levels of deprivation grouped in decile 1.

Number of people in Farley Hill living in the most deprived 20% of areas of England by Child Wellbeing Index domain			
Child Wellbeing Index	Children in Need domain	Material Wellbeing domain	Education domain
6,406	4,672	6,406	7,813
Environment domain	Health domain	Housing domain	Crime domain
0	7,813	1,500	7,288

Source: Communities and Local Government (Child Wellbeing Index 2009)

Figure: Number of people in each deprivation decile, Child Wellbeing Index 2009

Source: Communities and Local Government (Child Wellbeing Index 2009)



³ Please note that there are currently no planned updates for this dataset, however we still consider it to be relevant.

⁴ Material wellbeing - children experiencing income deprivation; Health and disability – children experiencing illness, accidents and disability; Education - education outcomes including attainment, school attendance and destinations at age 16; Crime - personal or material victimisation of children; Housing - access to housing and quality of housing for children; Environment - aspects of the environment that affect children’s physical well-being; Children in need – vulnerable children receiving LA services.



What information is shown here?

The information on this page looks at pensioner groups including those that may face greater risks or who may have different types of need. There are three measures included: pensioners without access to transport, pensioner loneliness and pensioners in poverty.

Pensioners without access to transport are those with no access to a car or van. The dataset only includes pensioners living in private households.

There are two indicators of pensioner loneliness. The census provides a measure of the proportion of pensioners living alone (defined as households of one pensioner and no other household members). In addition, Age Concern have developed a Loneliness Index (which predicts the prevalence of loneliness amongst people aged 65+) based on census data. Areas with a value closer to 0 predict a greater prevalence of loneliness amongst those aged 65 and over and living in households compared to areas with a value further away from 0.

Pensioners in poverty are those in receipt of Pension Credit. Pension Credit provides financial help for people aged 60 or over whose income is below a certain level set by the law.

The information boxes present information on the counts of pensioner households or pensioners in each category. The chart on the top right shows the change in the proportion of people receiving Pension Credit across Farley Hill and comparator areas.

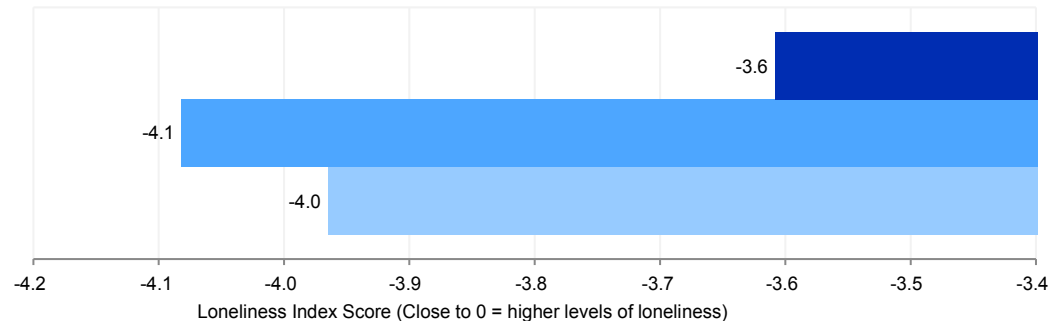
The chart on the bottom right compares Loneliness Index scores across Farley Hill and comparator areas - a value closer to 0 predicts a greater prevalence of loneliness amongst those aged 65.

Private pensioner households with no car or van (Census 2011)	Households of one pensioner (Census 2011)	State pension claimant (DWP Nov-18)	Pension credit claimant (DWP: Nov-18)
592	476	1,213	390

Figure: Pension Credit claimants, Source: Department for Work and Pensions (Nov-18)



Figure: Loneliness index (probability of loneliness for those aged 65 and over). Source: Age UK (2011)





What information is shown here?

The information on this page looks at household deprivation and households with multiple deprivation.

The information boxes show the number of households which are deprived in one of the four Census 2011 deprivation dimensions. The Census 2011 has four deprivation dimension characteristics: a) Employment: Any member of the household aged 16-74 who is not a full-time student is either unemployed or permanently sick; b) Education: No member of the household aged 16 to pensionable age has at least 5 GCSEs (grade A-C) or equivalent AND no member of the household aged 16-18 is in full-time education c) Health and disability: Any member of the household has general health 'not good' in the year before Census or has a limiting long term illness d) Housing: The household's accommodation is either overcrowded; OR is in a shared dwelling OR does not have sole use of bath/shower and toilet OR has no central heating. These figures are taken from responses to various questions in census 2011.

Households with multiple deprivation are households experiencing four key measures of deprivation:

- All adult household members have no qualifications
- At least one household member is out of work (due to unemployment or poor health)
- At least one household member has a limiting long-term illness
- The household is living in overcrowded conditions

Household is not deprived in any dimension (Census 2011)	Household is deprived in 1 dimension (Census 2011)	Household is deprived in 2 dimensions (Census 2011)	Household is deprived in 3 dimensions (Census 2011)
1,241	1,415	1,093	340

Households suffering multiple deprivation (Census 2011)
33



What information is shown here?

The information on this page looks at the number and proportion of people in two groups with specific needs: mental health issues and people providing unpaid care.

The figures for people with mental health issues are based on Employment Support Allowance/Incapacity Benefit claimants who are claiming due to mental health related conditions. Incapacity Benefit is payable to persons unable to work due to illness or disability.

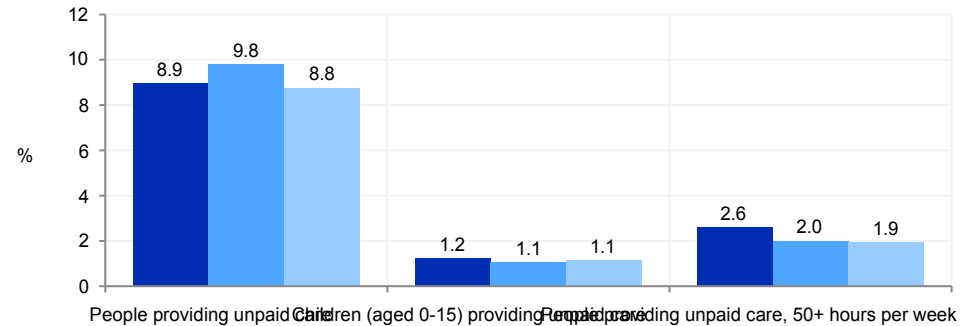
Informal care figures show people who provide any unpaid care by the number of hours a week they provide that care. A person is a provider of unpaid care if they give any help or support to another person because of long-term physical or mental health or disability, or problems related to old age.

The line chart on the right shows the change in the number of people claiming Incapacity benefit for mental health reasons as a proportion of the working age population and the chart below it includes figures for children and all people providing unpaid care across Farley Hill.

Mental health related benefits (DWP Nov-18)	People providing unpaid care (Census 2011)	Unpaid care (50+ hours per week) (Census 2011)
310	999	291

Figure: Receiving Employment Support Allowance (ESA) and Incapacity Benefit (IB) due to mental health
Source: Department for Work and Pensions

Figure: People providing unpaid care
Source: Census 2011





What information is shown here?

The information on this page looks at the type of dwelling space people live in. A dwelling space is the accommodation occupied by an individual household or, if unoccupied, available for an individual household, for example the whole of a terraced house, or a flat in a purpose-built block of flats.

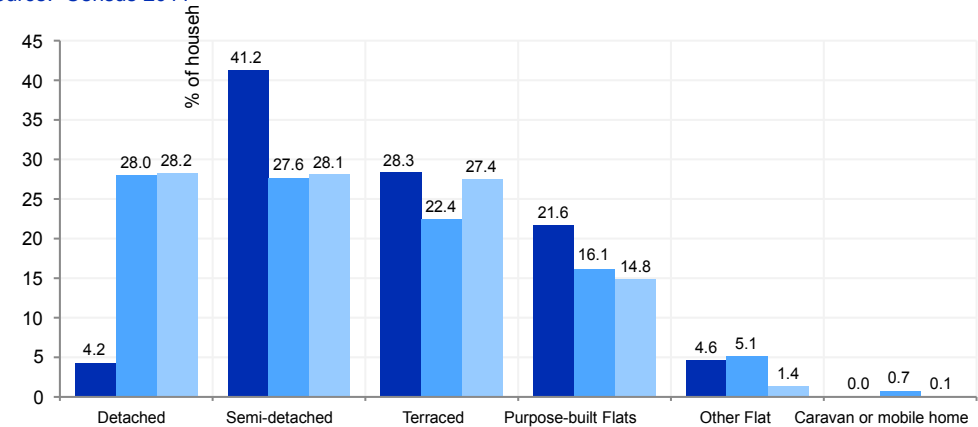
The information boxes to the right show the number of people in Farley Hill living in each accommodation type. The chart on the right shows a breakdown of households by accommodation type across Farley Hill and comparator areas.

Detached	Semi-detached	Terraced	Purpose built flat
178	1,734	1,192	910
Flat (in converted house)	Flat (in commercial property)	Caravan or other temporary dwelling	Second homes (2001)
160	34	00	03

Source: Census 2011

Figure: Dwellings type breakdown

Source: Census 2011





What information is shown here?

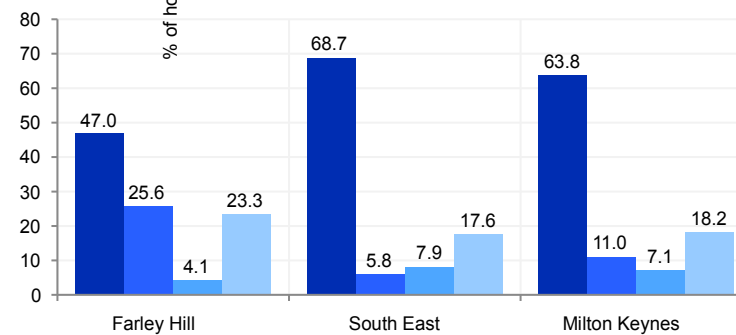
The information on this page looks at the tenure of housing in Farley Hill. The information boxes show the number of households broken down by tenure type and the chart shows the tenure breakdown across Farley Hill and comparator areas.

- 'Owner occupied' housing includes accommodation that is either owned outright, owned with a mortgage or loan, or shared ownership (paying part rent and part mortgage).
- 'Social rented' housing includes accommodation that is rented from a council (Local Authority) or a Housing Association, Housing Co-operative, Charitable Trust, Non-profit housing company or Registered Social Landlord.
- 'Rented from the Council includes accommodation rented from the Local Authority
- 'Housing Association or Social Landlord' includes rented from Registered Social Landlord, Housing Association, Housing Co-operative, Charitable Trust and non-profit housing Company.
- 'Private rented or letting agency' includes accommodation that is rented from a private landlord or letting agency.
- 'Other Rented' includes employer of a household member and relative or friend of a household member and living rent free.

Owner occupied	Owner-occupied: owned outright	Owner-occupied owned: with mortgage or loan
1,936	736	1,189
Owner-occupied: shared ownership	Social rented households	Rented from Council
11	1,226	1,056
Rented from Housing Association or Social Landlord	Rented from private landlord or letting agency	Other rented dwellings
170	845	115

Source: Census 2011

Figure: Housing tenure breakdowns
Source: Census 2011





What information is shown here?

The information in this section shows measures of housing costs in Farley Hill. Data on house prices is from the Land Registry open data price-paid dataset (www.landregistry.gov.uk/market-trend-data/public-data/price-paid-data), which is updated monthly.

House prices by dwelling type

The information boxes on the right and the top-left chart on the following page show the mean house prices by accommodation type across Farley Hill and comparator areas for four key dwelling types (detached houses, semi-detached houses, flats and terraced houses). The bottom-left chart on page 25 shows the 10-year inflation adjusted average change in house prices across Farley Hill and comparator areas.

The top-right chart on page 25 displays the monthly change in the number of transactions and average price across Farley Hill and the bottom-right chart displays the ratio of the number of residential property transactions (Land Registry Oct16-Sep17) to the number of owner occupied and privately rented dwellings (Census 2011) – an approximate measure of the proportion of housing stock that has change hands of the year, or the housing ‘churn’.

Council tax bands

The data on Council Tax bands shows the number and proportion (as a percentage of all rateable households) of houses in bands A, B or C (the lowest price bands) and F, G and H (the highest price bands) locally. These price bands are set nationally, so can be used to show how the cost of all local property (not just those properties that have recently been sold) compares with other areas; the chart on the right compares Farley Hill and comparator areas for these Council Tax bands.

Average house price (all types of housing) (Land registry June18-May19)	Average house price (detached) (Land registry June18-May19)	Average house price (flats) (Land registry June18-May19)
£234,175	£255,000	£154,059
Average house price (semi-detached) (Land registry June18-May19)	Average house price (terraced) (Land registry June18-May19)	Households in Council Tax Band A (Valuation Office Agency (VOA) 2018)
£259,938	£236,354	1,341
Households in Council Tax Band B (VOA 2018)	Households in Council Tax Band C (VOA 2018)	Households in Council Tax Band F-H (VOA 2018)
2,452	615	27

Figure: Dwelling stock by council tax band
Source: Valuation Office Agency (2018)

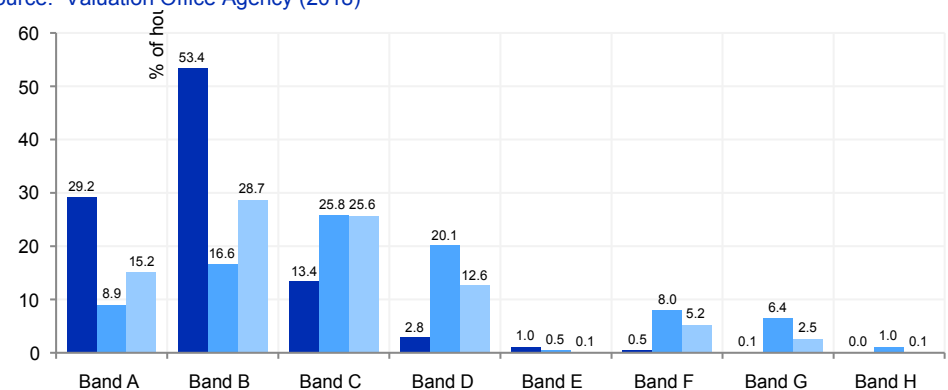




Figure: Average property price by dwelling type
Source: Land registry

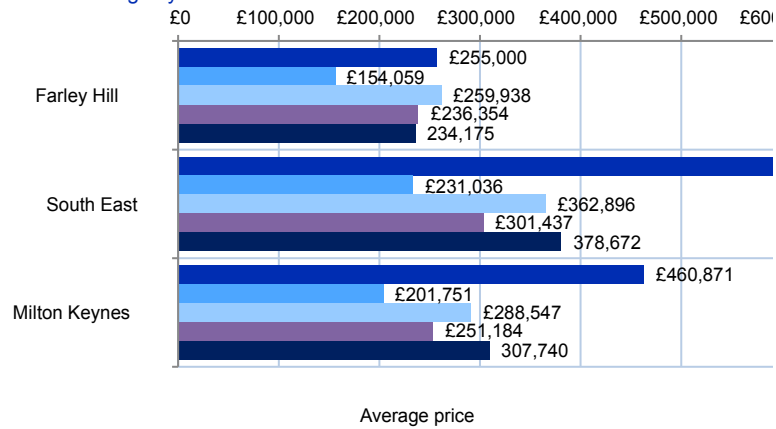


Figure: Average house prices and number of transactions, by month
Source: Land Registry



Figure: 10-year average house price change (inflation adjusted)
Source: Land registry Oct06-Oct07 to Oct16-Sep17

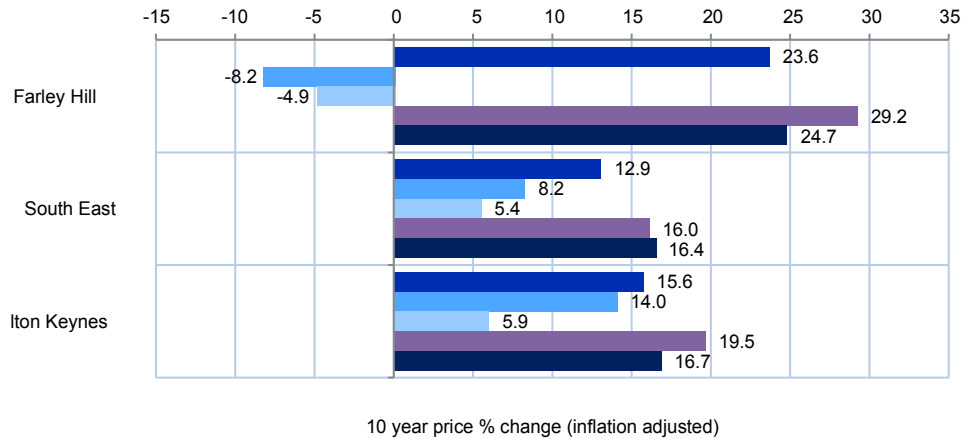
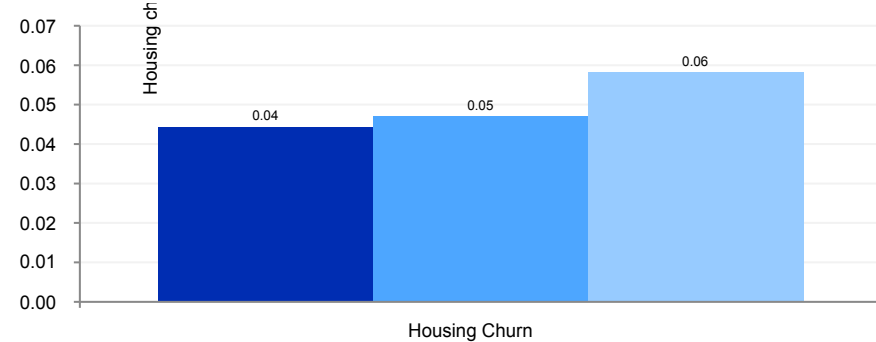


Figure: Ratio of residential property transactions to the total number of private dwellings
Source: Land Registry Oct16-Sep17, Census 2011





What information is shown here?

The information in this section combines measures of local house prices and local earnings to provide a more balanced picture of housing affordability.

There are three indicators displayed here: **housing affordability gap**, **savings ratio** and **total affordability ratio**. Each of these indicators is given for two measures of house price: the average (median) house price and the lower quartile house price. The lower quartile house price is set such that the cheapest 25% of houses fall within this price and is a measure of the cost of cheaper, more affordable housing in the area.

Housing affordability gap: An estimate of the gap between the cost of local houses and the amount residents can borrow. This is defined as the difference between the local house price (either median or lower quartile) and 4.5 times local annual earnings (mortgage lenders are typically willing to lend 4-5 times annual salaries). Higher figures represent more unaffordable houses.

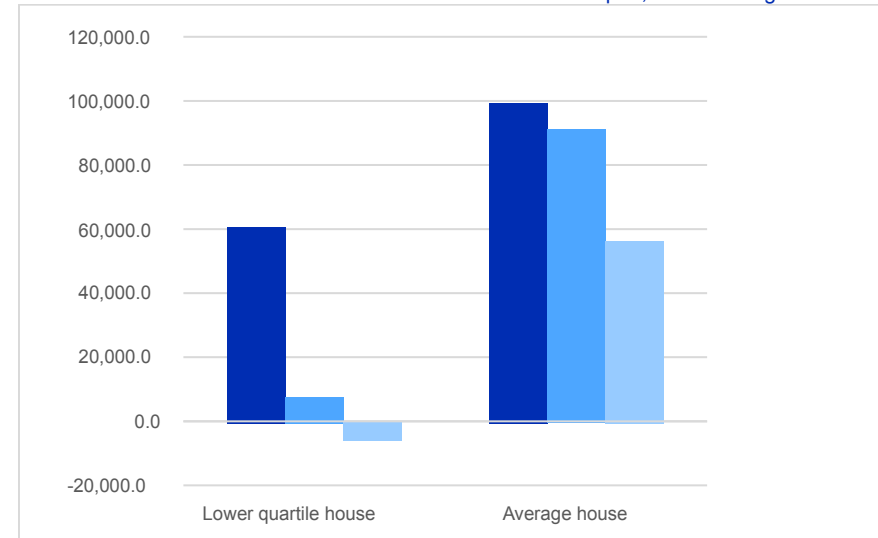
Savings ratio: The ratio between 15% of the house price (an estimate of the savings required for a deposit) and monthly earnings. It can be interpreted as the number of months' worth of earnings required for a deposit (not accounting for inflation or changes in earnings or house prices).

Total affordability ratio: This is the ratio between the total house price and annual earnings. It can be interpreted as the number of years' worth of earnings required for a deposit (not accounting for inflation or changes in earnings or house prices).

The data for these measures come from the ONS House Price Statistics for Small Areas (HPSSA) and ONS Income Estimates. Earnings data is published at MSOA level and house price data is published at LSOA level and above) Where necessary, we have modelled data to LSOA and OA geographies. The methodology used to produce these statistics is based ONS's housing affordability analysis.

Lower quartile house price ('affordable housing')	Average house price
Affordability gap	Affordability gap
£60,656	£99,291
Savings ratio (months of earnings for a deposit)	Savings ratio (months of earnings for a deposit)
12.15	14.63
Total ratio (years of earnings for a house)	Total ratio (years of earnings for a house)
6.47	7.68

Figure: Housing affordability gap for lower quartile house prices and average house prices. Source: ONS House Price Statistics for Small Areas Oct16-Sep17; ONS earnings data 2015/2016





What information is shown here?

The information on this page details indicators of the built environment: overcrowded housing, vacant housing, population density, the size of housing units and the proportion of households lacking central heating.

A household's accommodation is described as 'without central heating' if it had no central heating in any of the rooms (whether used or not). The data also shows breakdowns by tenure. This enables users to compare differences in the proportion of households with inadequate heating supply in the owner occupied, social rented and private rented sectors.

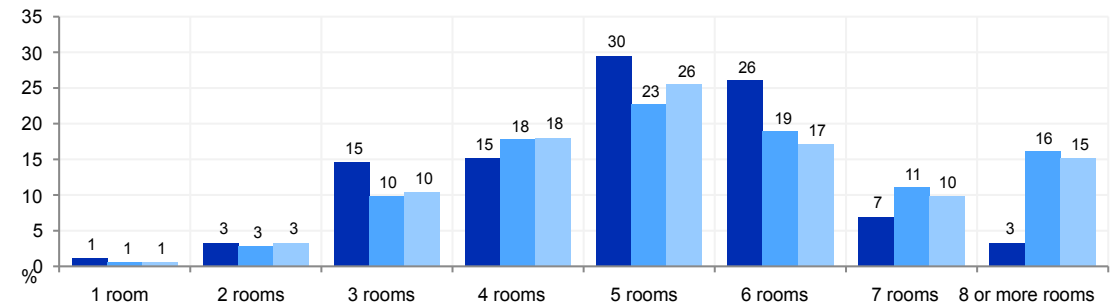
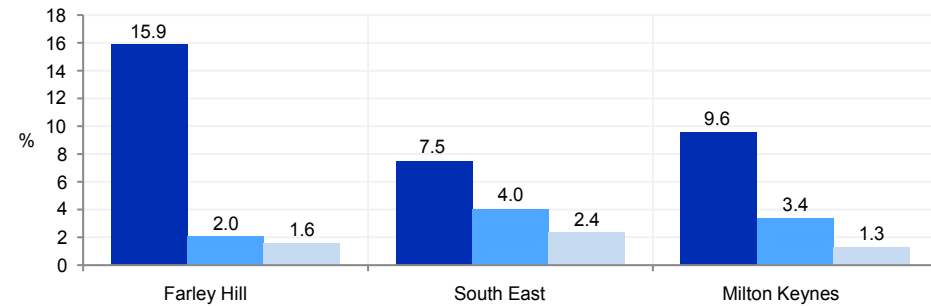
Households are classified as overcrowded if there is at least one room fewer than needed for household requirements using standard definitions. The standard used to measure overcrowding is called the 'occupancy rating' which relates to the actual number of rooms in a dwelling in relation to the number of rooms required by the household, taking account of their ages and relationships. The room requirement states that every household needs a minimum of two common rooms, excluding bathrooms, with bedroom requirements that reflect the composition of the household. The occupancy rating of a dwelling is expressed as a positive or negative figure, reflecting the number of rooms in a dwelling that exceed the household's requirements, or by which the home falls short of its occupants' needs.

Vacant dwellings are households that do not have any usual residents. This includes households that may still be used by short-term residents, visitors who were present on census night, or a combination of short-term residents and visitors. It also includes vacant household spaces and household spaces that are used as second addresses.

Population density (persons / hectare)	Houses lacking central heating	Overcrowded Housing	Vacant Dwellings
45.8	66	655	86
Dwellings with 2 rooms or fewer	Dwellings with 8 or more rooms	Average dwelling size (persons)	
181	136	2.77	

Source: Census 2011. Population density data – Office for National Statistics (ONS) 2016

Figure: Top - Housing Environment; Bottom - Dwelling size (number of rooms per household)
Source: Census 2011





What information is shown here?

The Department for Business, Energy and Industrial Strategy publishes small area estimates of domestic gas and electricity consumption in megawatt hours (Mwh). Gas consumption data are weather corrected annual estimates of consumption for all domestic meters. A similar methodology is used for collecting domestic electricity consumption data, however, these values are not weather corrected. The methodologies are sufficiently similar that summing the electricity consumption and gas consumption gives an estimate of total annual energy consumption.

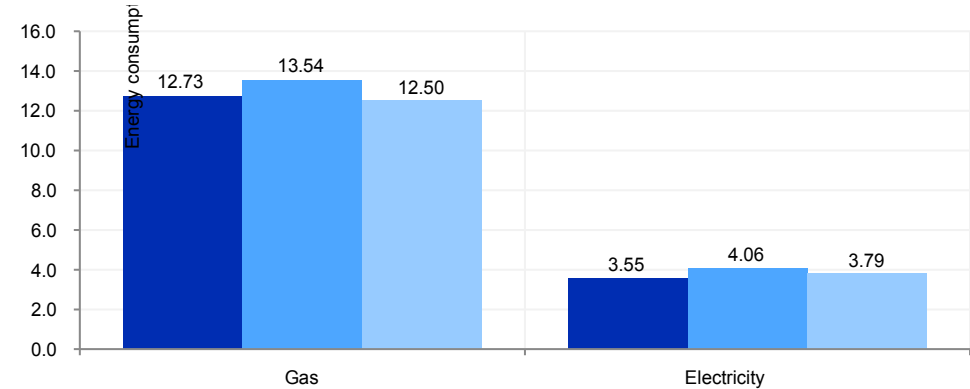
The data on this page were originally published by BEIS at postcode level and have been designated as experimental statistics. Experimental statistics are statistics that are new and subject to possible changes to meet user needs or that do not meet the rigorous quality standards of National Statistics. To avoid disclosure, postcodes are excluded if they contain less than 6 meters or that have average consumption figures of 0 or 1.

The estimated number households not connected to the gas network is based on the difference between the number of households and the number of domestic gas meters.

To read more about the data and methodology here please visit <https://www.gov.uk/government/collections/sub-national-electricity-consumption-data>

Electricity consumption (Mwh)	Gas consumption (Mwh)	Households not connected to the gas network
14236	52259	254
(3.55 Mwh per meter) Milton Keynes average = 3.79 Mwh per meter	(12.73 Mwh per meter) Milton Keynes average = 12.50 Mwh per meter	(5.73% of households) Milton Keynes average = 6.11%

Source: Department for Business, Energy and Industrial Strategy, 2015 (consumption), 2017 (not connected to gas network)
Figure: Domestic gas and electricity consumption





What information is shown here?

This page details the energy efficiency ratings of domestic buildings within Farley Hill.

The data are taken from Energy Performance Certificates (EPC) for domestic buildings published by DCLG and have been aggregated to Output Areas by the Consumer Data Research Centre. The definitions of the measures on the right are given below.

The energy efficiency rating, expressed in Standard Assessment Procedure (SAP) points, is a score between 1-100 with 1 being poor energy efficiency and 100 being excellent energy efficiency. The current average rating of buildings is given alongside the potential rating (if improvements to the buildings were made) and the difference between the two - the 'energy efficiency gap'.

Buildings are awarded a band A EPC rating if their energy efficiency rating is equal or above 92. The number and proportion of inspected band A buildings is given as well as the potential numbers. Again, the difference between current and potential is given. Please be aware that these figures do not account for all domestic buildings in an area.

Only homes that have been built, bought, sold or retrofitted since 2008 have an EPC, which represents about 50 to 60 per cent of homes within a local authority area. Additionally, data has not been published where the holder of the energy certificate has opted-out of disclosure, energy certificates are excluded on grounds of national security or energy certificates are marked as "cancelled" or "not for issue".

Energy efficiency rating, current (SAP points)	Energy efficiency rating, potential (SAP points)	Energy efficiency gap (SAP points)
67.16	80.24	13.09
Milton Keynes average = 69.97	Milton Keynes average = 80.08	Milton Keynes average = 10.12
Band A buildings, current	Band A buildings, potential	Difference between current and potential
1	81	80
(0.04%) Milton Keynes average = 0.15%	(3.20%) Milton Keynes average = 3.44%	(3.16%) Milton Keynes average = 3.30%
Source: DCLG. Data collected between 2009-2016.		

Figure: Energy efficiency rating (SAP points)

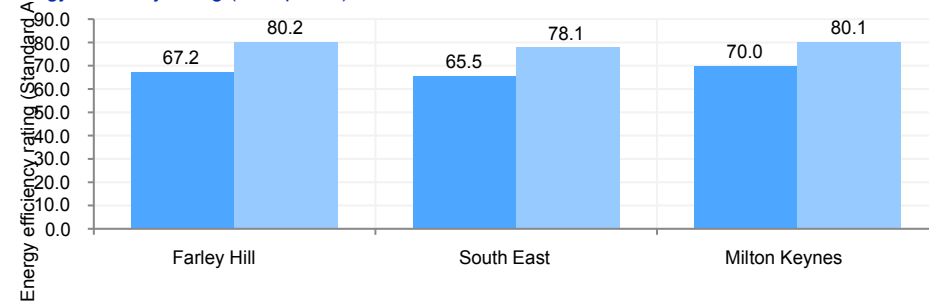
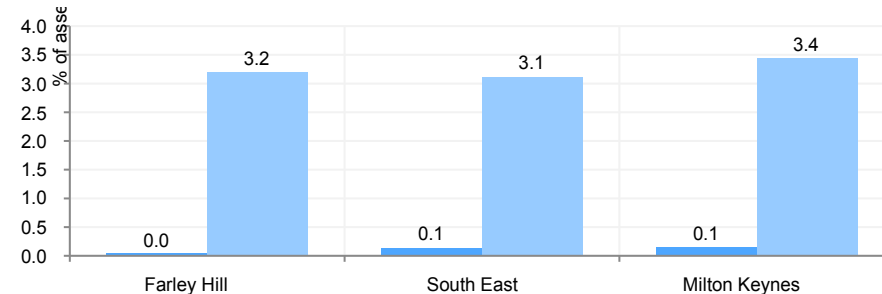


Figure: Band A (high energy efficiency) rated buildings



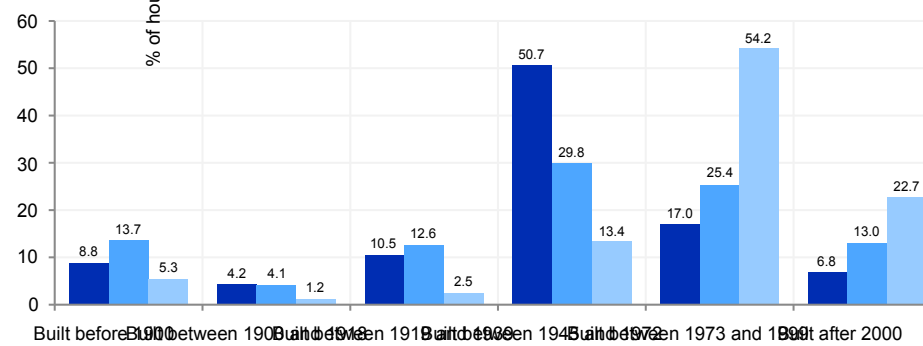


What information is shown here?

The information on this page shows the number of domestic properties (the 'dwelling stock') broken down by age of property (when the property was constructed). The rate figures refer to the proportion of all properties whose build age is known.

Built before 1900	Built between 1900 and 1939	Built between 1945 and 1999	Built after 2000
406	677	3,109	312

Figure: Dwellings by age of dwelling (year property was constructed)
Source: Valuation Office Agency (VOA) 2018





What information is shown here?

The information on this page shows the number of people living in communal establishments, with breakdowns by the main types.

A communal establishment is defined as an establishment providing managed (full-time or part-time supervised) residential accommodation.

The information boxes on the right show the number and proportion of people in communal establishments by main type of establishment. Medical and care establishments include psychiatric hospital / homes, other hospital homes children's homes, residential care homes, nursing homes managed by the NHS, Local Authority or private organisation; Educational establishments include primarily University halls of residence; Defence establishments include barracks, air bases and naval ships; Other establishments include prison service establishments, bail hostels, hotels, boarding houses or guest houses, hostels and civilian ships.

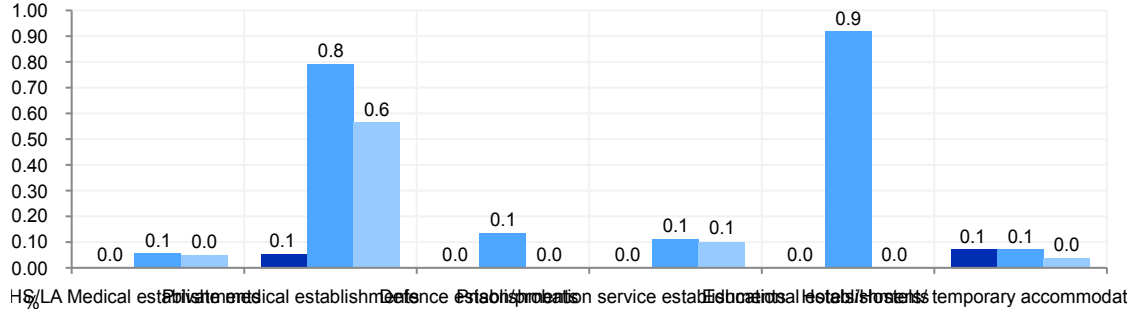
The chart on the top right provides the same information with associated comparator areas.

All in communal establishments	Medical and care establishments	Education establishments	Defence establishments	Other establishments
49	40	00	00	01

Source: Census 2011

Figure: Communal establishments by type

Source: Census 2011





What information is shown here?

The information on this page and the following shows the level of recorded crime in Farley Hill and comparator areas. This is based on data for individual crime incidents published via the www.police.uk open data portal, which has been linked by Local Insight to selected neighbourhoods. Further information on how these crimes and incidents have been categorised, as well as which crimes and incidents have been mapped and why, is available at: www.police.uk/about-this-site/faqs/#why-are-some-crimes-not-displayed-on-the-map

The information boxes show counts and rates for the main crime types and anti-social behaviour incidents. The overall crime rate is presented for monthly, quarterly and annual snapshots, with the underlying crime types shown as annual totals.

The line charts to the right and on the following page track monthly change in recorded crime across five key offences (violent crime, anti-social behaviour, burglaries, criminal damage and vehicle crime) across Farley Hill and comparator areas.

Note: Police.uk crime counts were not recorded for Cambridgeshire or Gloucestershire for May 2018, so data is missing for areas covered by these police forces for this time point.

All crimes May 2019 monthly total	All crimes March19-May19	All crimes June18-May19
118	327	1,047
Violent crimes June18-May19	Criminal damage incidents June18-May19	Anti-social behaviour incidents June18-May19
317	81	227
Burglaries June18-May19	Robberies June18-May19	Vehicle crimes June18-May19
69	20	126

Source: Recorded crime offences – <https://data.police.uk/> (2019)

Figure: Violent crime offences
Source: <https://data.police.uk/>



(b)

Figure: Anti-social behaviour offences
Source: <https://data.police.uk/>

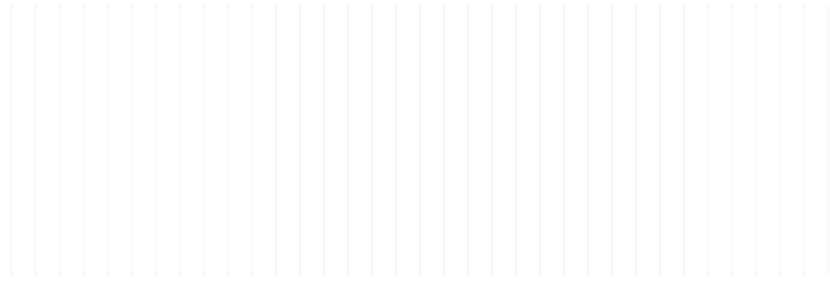


Figure: Burglary offences
Source: <https://data.police.uk/>



Figure: Criminal damage offences
Source: <https://data.police.uk/>



Figure: Vehicle crime offences
Source: <https://data.police.uk/>





What information is shown here?

The information in this section explores variations in life expectancy and premature mortality. Life expectancy is a measure of the age a person born today can expect to live until, if they experience current mortality rates throughout their life. The chart on the right shows life expectancy at birth for females and males in Farley Hill and comparator areas.

The first chart on the following page shows the standardised mortality ratio for all causes and all ages for Farley Hill. This indicator highlights the ratio of observed to expected deaths (given the age profile of the population). A mortality ratio of 100 indicates an area has a mortality rate consistent with the age profile of the area, less than 100 indicates that the mortality rate is lower than expected and higher than 100 indicates that the mortality rate is higher than expected.

The second chart on the following page show incidence of cancer (with breakdowns for the most common forms of cancer). The data is presented as an incidence ratio (ratio of observed incidence vs expected incidence given the age profile of the population).

Figure: Life expectancy
Source: Office for National Statistics (2013-2017)

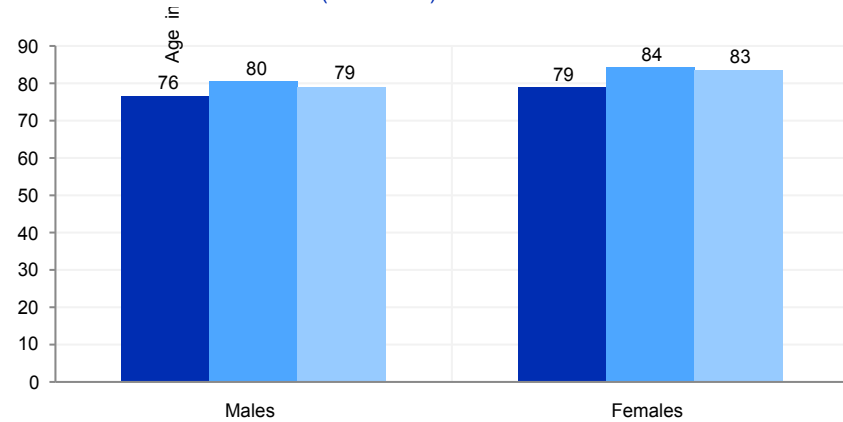


Figure: Healthy Life Expectancy
Source: Office for National Statistics (2009-2013)

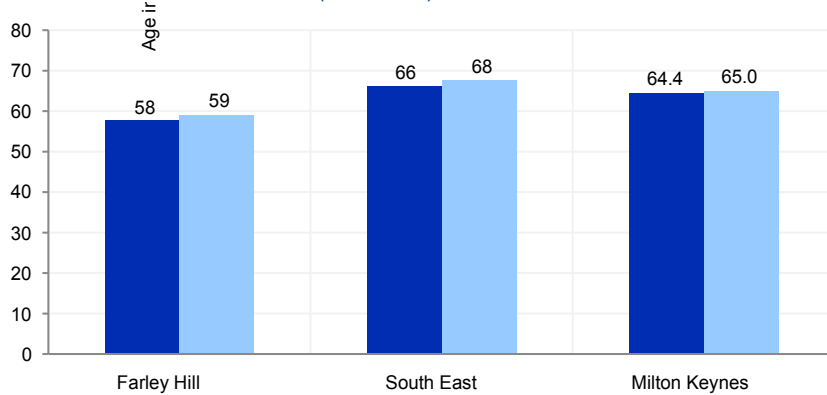


Figure: Disability-free Life Expectancy
Source: Office for National Statistics (2009-2013)

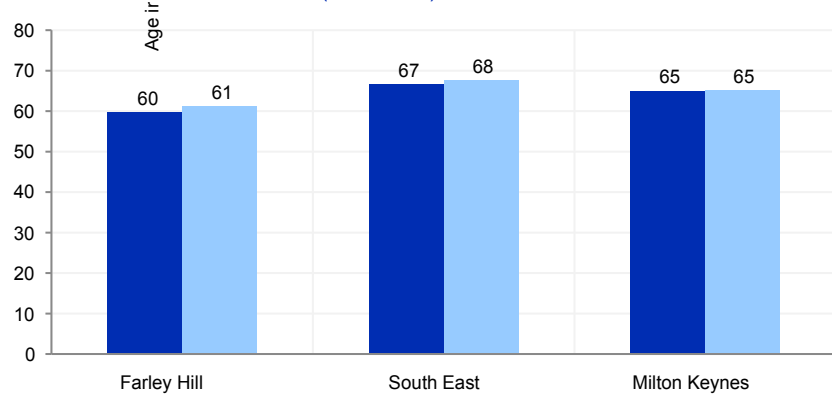






Figure: Incidence of cancer: Standardised incidence ratio (select causes)

Source: Office for National Statistics (2012-2016)

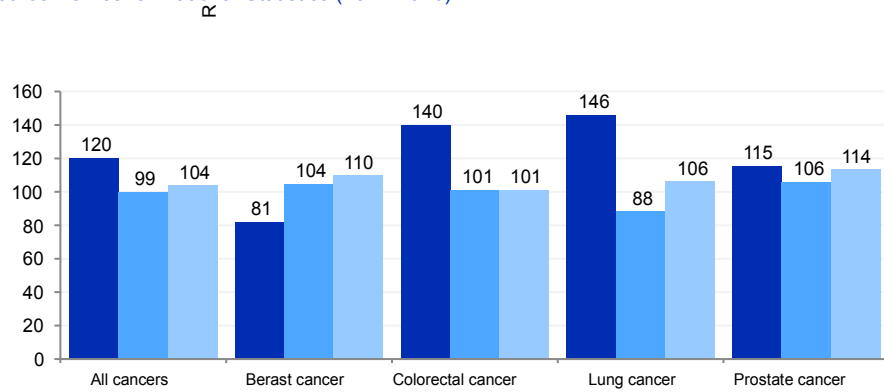
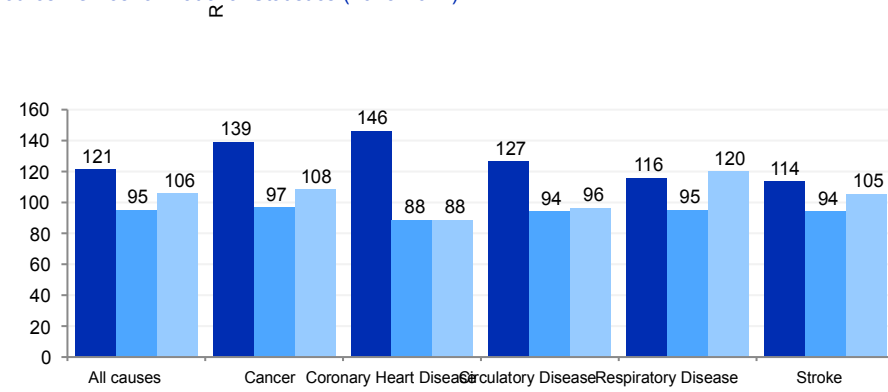


Figure: Standardised mortality ratio (select causes)

Source: Office for National Statistics (2013-2017)





What information is shown here?

The information in this section looks at general levels of health, focusing on the number of people living in neighbourhoods with poor levels of overall health (health deprivation hotspots) and the number of people with a limiting long-term illness.

Limiting long-term illness is defined as any long-term illness, health problem or disability which limits someone's daily activities or the work they can do. Health deprivation 'hotspots' are neighbourhoods ranked among the most deprived 20% of neighbourhoods in England on the Indices of Deprivation 2015 Health domain. The domain measures morbidity, disability and premature mortality. All neighbourhoods in England are grouped into ten equal sized groups "deciles"; the 10% of neighbourhoods with the highest level of health deprivation are grouped in decile 10, and so on with the 10% of neighbourhoods with the lowest levels of health deprivation grouped in decile 1.

The chart on the right shows the number of people in Farley Hill living in each health decile. The charts below shows the proportion of residents in Farley Hill with a limiting long-term illness by age.

Number of people living in health deprivation 'hotspots' (Indices of Deprivation 2015)	People with a limiting long-term illness (Census 2011)	People aged 16-64 with a limiting long-term illness (Census 2011)	Babies born with a low birth weight (ONS 2011-2015)
5,174	1,945	1,050	55

Figure: Number of people in each deprivation decile, Health domain
Source: Indices of Deprivation 2015

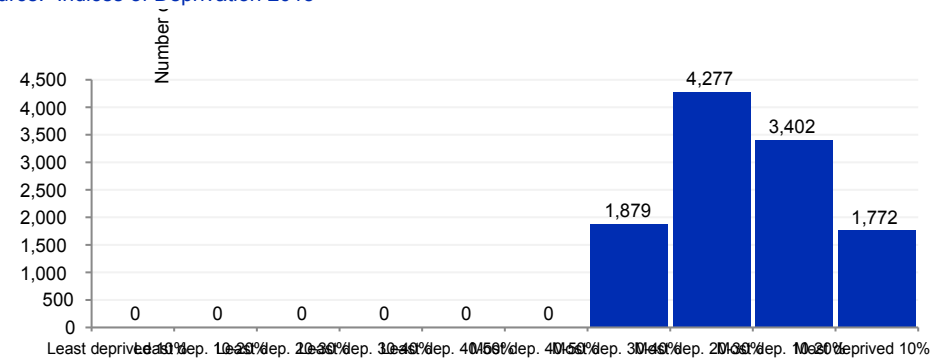
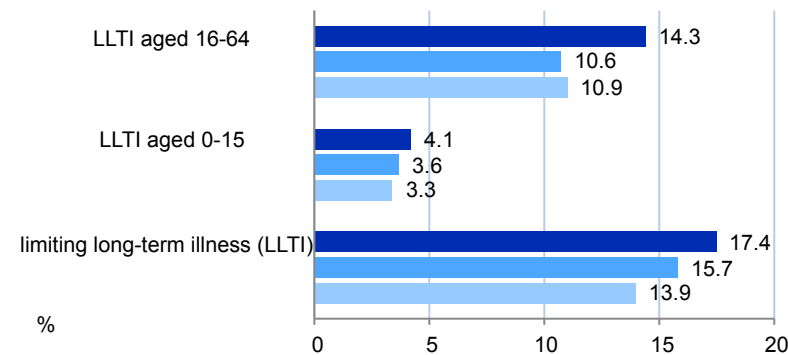


Figure: People with a limiting long-term illness
Source: Census 2011







What information is shown here?

The information in this section looks at admissions to hospital by main health condition and hospital admissions and A&E attendance rates for children (aged under 5 years). The chart on the top right shows emergency admissions to hospital across Farley Hill and comparators. The chart on the bottom right shows elective in-patient hospital admissions (admissions that have been arranged in advance).

The data are presented as standardised ratios; a ratio of 100 indicates an area has an admission rate consistent with the national average, less than 100 indicates that the admission rate is lower than expected and higher than 100 indicates that the admission rate is higher than expected.

The information boxes at the bottom show the rate of emergency hospital admissions and A&E attendances for children (aged under 5 years) per 1,000 resident population in Farley Hill. Approximately 35% of all admissions in the NHS in England are classified as emergency admissions, costing approximately £11 billion a year. Over one quarter of emergency hospital admissions in children aged under 5 years in 2014/15 was for respiratory infections. A&E attendances in children aged under five years are often preventable, and commonly caused by accidental injury or by minor illnesses which could have been treated in primary care.

Emergency hospital admissions for children under 5 (per 1,000 population)	A&E attendance for children under 5 (per 1,000 population)
236	381

Source: Hospital Episode Statistics, Information Centre for Health and Social Care, Office for National Statistics (2013/14-2015/16)

Figure: Emergency hospital admissions: Standardised ratio (select causes)

Source: Hospital Episode Statistics, Information Centre for Health and Social Care, Office for National Statistics (2013/14 – 2017/18)

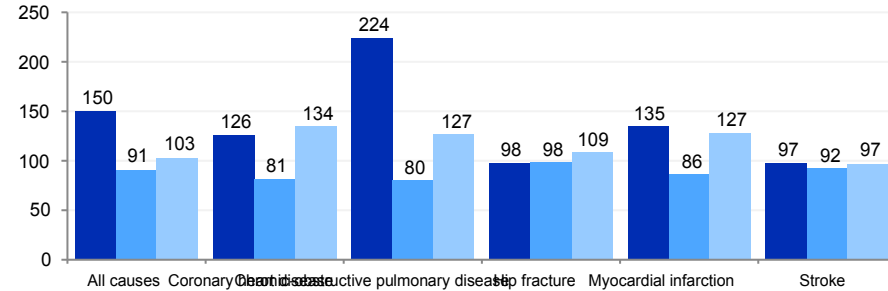
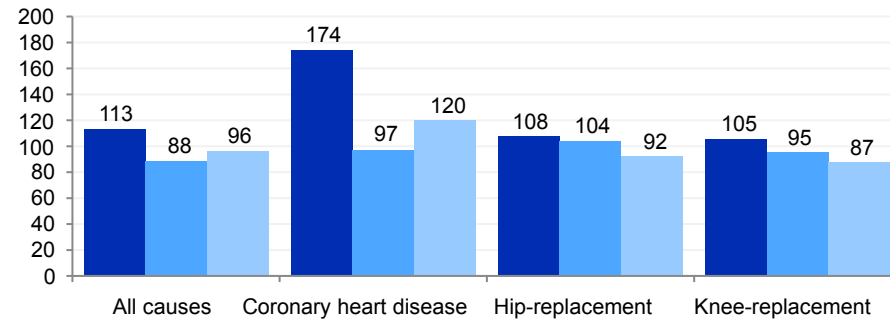


Figure: Elective hospital admissions: Standardised ratio (select causes)

Source: Hospital Episode Statistics, Information Centre for Health and Social Care, Office for National Statistics (2011/12-2014/15)





What information is shown here?

Arthritis UK have partnered with Imperial College London to produce modelled estimates of the prevalence of musculoskeletal conditions for MSOAs in England. The estimates were calculated by identifying risk factors, sourcing suitable data sources and using statistical techniques to produce synthetic estimates of the numbers of people with hip osteoarthritis, knee osteoarthritis and back pain.

We have defined percentages consistently with Arthritis UK's methodology. **Knee and hip osteoarthritis figures are expressed as a percentage of the population aged 45 and over. Back pain figures are expressed as a percentage of the total population.**

People are deemed to have severe pain if they have pain most of the time or they are unable to walk a quarter of a mile unaided or they have previously undergone hip or knee replacement due to arthritis.

For more information visit <https://www.arthritisresearchuk.org/arthritis-information/data-and-statistics/musculoskeletal-calculator.aspx>

© Arthritis Research UK

Number of people with knee osteoarthritis (Arthritis UK 2011)	Number of people with hip osteoarthritis (Arthritis UK 2011)	Number of people with back pain (Arthritis UK 2011)
707	412	1667
Number of people with severe knee osteoarthritis (Arthritis UK 2011)	Number of people with severe hip osteoarthritis (Arthritis UK 2011)	Number of people with severe back pain (Arthritis UK 2011)
239	126	965

Figure: Prevalence of hip and knee arthritis in people aged 45 and over
Source: Arthritis UK (2011)

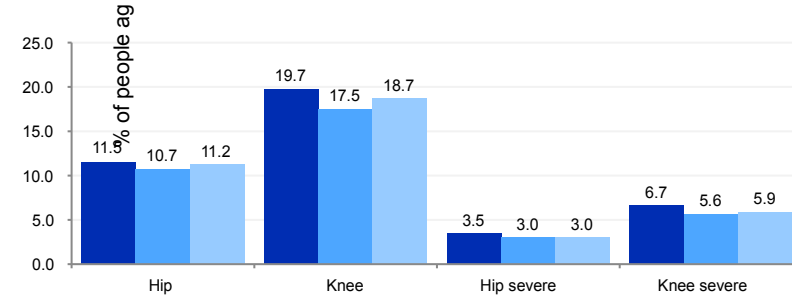
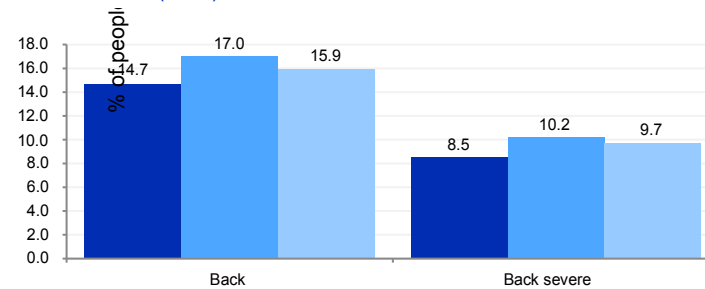


Figure: Prevalence of back pain in people of all ages
Source: Arthritis UK (2011)







What information is shown here?

The information on this page looks at lifestyle behaviours of people living in Farley Hill. Lifestyle behaviours are risk factors which play a major part in an individual's health outcomes and will have varying physical and psychological consequences.

The chart on the top right shows the healthy eating levels (consumption of five or more portions of fruit and vegetables a day among adults) in Farley Hill. It also shows smoking prevalence and levels of binge drinking in these areas. Binge drinking is defined as the consumption of at least twice the daily recommended amount of alcohol in a single drinking session (8 or more units for men and 6 or more units for women).

The chart on the bottom right shows the percentage of people children (in reception year and year 6) and adults classified as obese in Farley Hill. People are considered obese when their body mass index (BMI) a measurement obtained by dividing a person's weight by the square of the person's height, exceeds 30 kg/m2.

Data for adult health are modelled estimates created from Health Survey for England 2006-2008. This is due to a lack of alternative small-area data for these indicators.

Figure: "Healthy eating" (consumptions of 5+ fruit and veg a day), binge drinking and smoking
Source: Health Survey for England 2006-2008

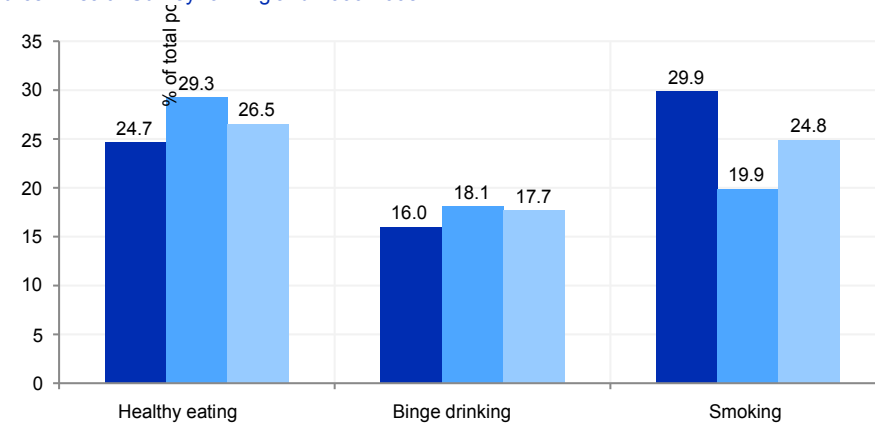
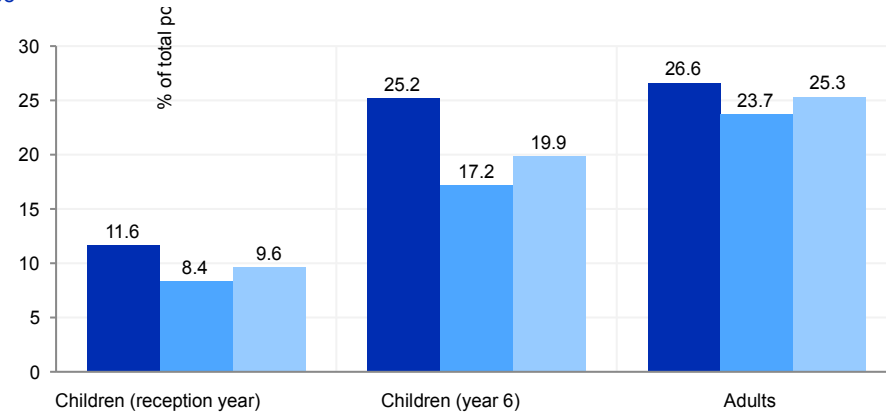


Figure: Children and adults classified as obese
Source: National Child Measurement Programme (NCMP) (2015/16 to 2017/18), Health Survey for England 2006-2008





What information is shown here?

The information on this page looks at further lifestyle behaviours of people living in Farley Hill.

The chart on the top right shows the percentage of children (in reception year and year 6) classified as overweight or obese in Farley Hill. This indicator shows the number of children classified as overweight (including obese) where their BMI is on or above the 85th centile of the British 1990 growth reference (UK90) according to age and sex. The indicator can be used to estimate and monitor excess weight and obesity in children in order to reduce prevalence, inform planning and delivery of services for children, and ensure the proper targeting of resources to tackle obesity.

The chart on the bottom right shows the modelled prevalence of smoking status for people aged 15 in Farley Hill. It shows the percentage of those aged 15 who are regular smokers or regular or occasional smokers. There is a large body of evidence showing that smoking behaviour in early adulthood affects health behaviours later in life. The Government's Tobacco Control Plan (2017) sets out their aim to reduce the number of 15 year olds who regularly smoke from 8% to 3% or less. This indicator will ensure that as well as focusing on reducing the prevalence of smoking among adults (primarily through quitting) local authorities will also address the issue of reducing the uptake of smoking among children.

Figure: Children classified as overweight or obese
Source: National Child Measurement Programme, NHS Digital (<http://www.localhealth.org.uk/>) (2015/16-2017/18)

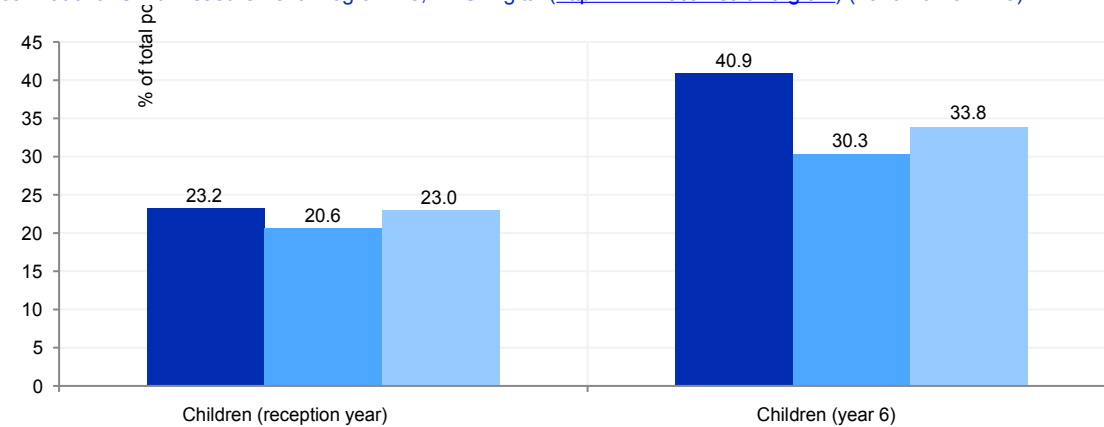
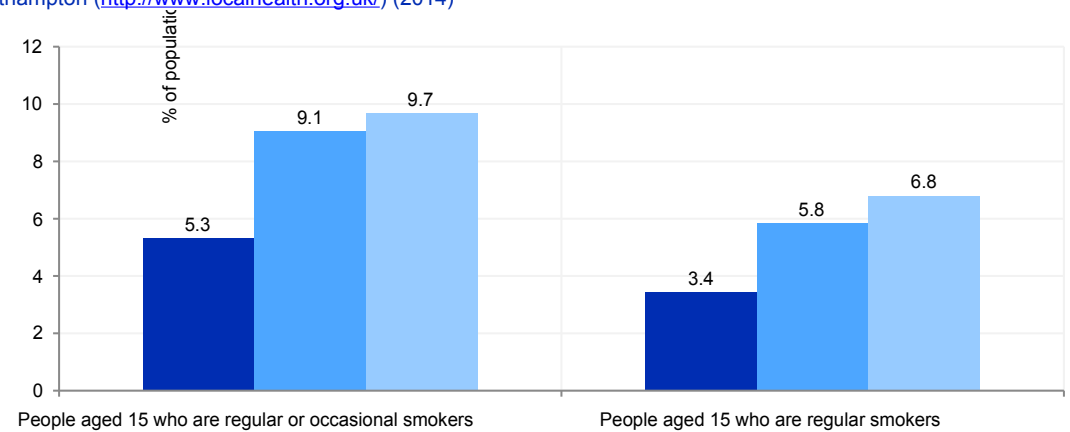


Figure: Prevalence of people aged 15 smoking status
Source: Department of Geography, University of Portsmouth and Geography and Environment, University of Southampton (<http://www.localhealth.org.uk/>) (2014)





What information is shown here?

This chart shows estimates of the levels of physical activity among adults. The data have been produced by Sport England using a Small Area Estimation technique - modelling down from a National Survey (the Active Lives Survey (2018)) to Middle Layer Super Output Area (MSOA) based on the local demographic characteristics of the local population. For more information on the modelling method see <https://www.sportengland.org/media/13327/sae-techreport-2018.pdf>

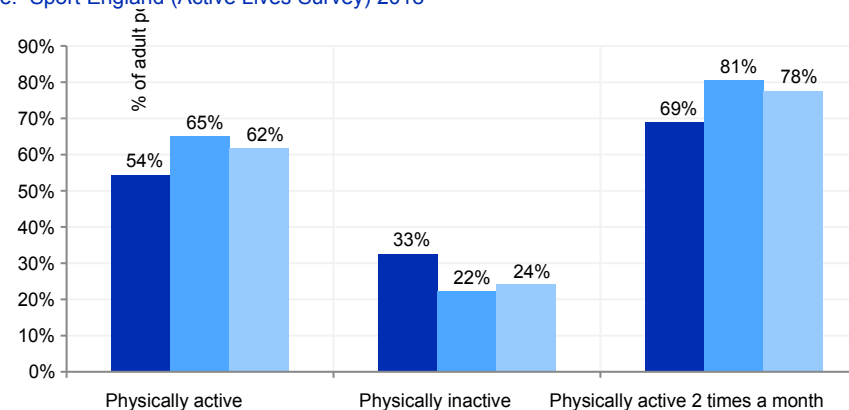
The categories of physical activity follow the guidelines set by the Chief Medical Officer and are defined below:

Physically active: undertaking at least 150 minutes per week in the past month excluding gardening

Physically inactive: undertaking less than 30 minutes in the past month excluding gardening

Physical activity at least twice a month: undertaking physical activity on at least two occasions in the past month

Figure: Physical activity among adults
Source: Sport England (Active Lives Survey) 2018





What information is shown here?

The information on this page looks at the estimated prevalence of a different health conditions in Farley Hill.

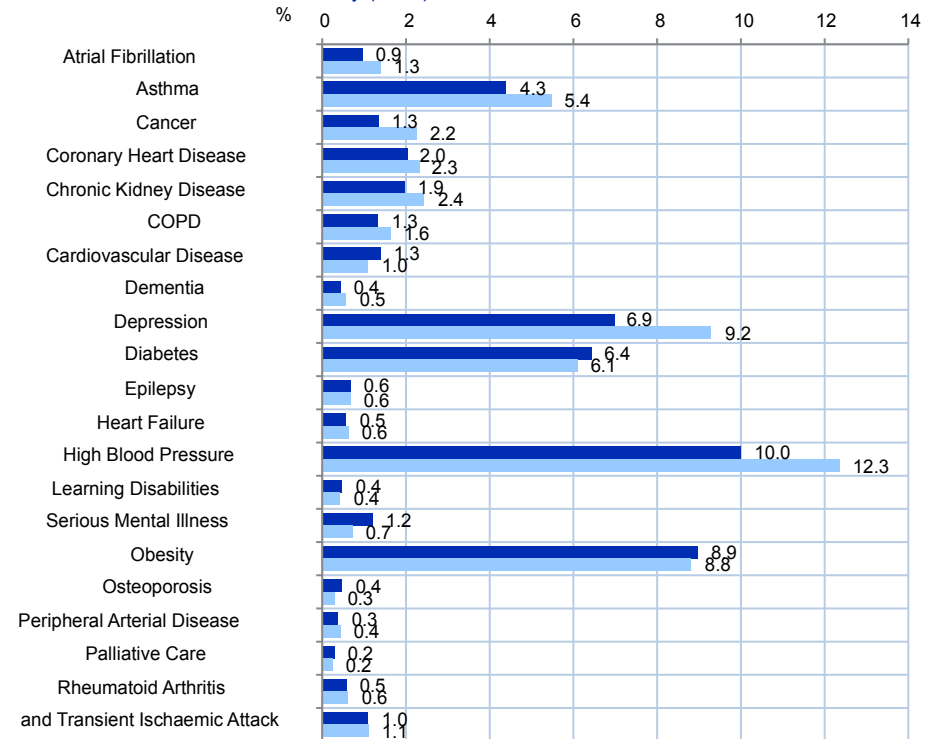
The estimates calculated are based on the number of people listed on GP registers in 2017/18, and the number of people recorded as having the relevant health conditions. The data from England's GP practices was published by NHS digital.

It should be noted that these are only estimates and that they are sensitive to the accuracy of GP data reporting. For some conditions (e.g. obesity and dementia), GP-recorded prevalence is lower than the proportion of people living with the condition.

For full notes, methodology, and limitations, please see <https://commonslibrary.parliament.uk/social-policy/health/diseases/constituency-data-how-healthy-is-your-area> for more details.

The bar chart on the right shows a detailed breakdown of the estimated percentage of prevalence by category of health condition.

Figure: % of estimated disease prevalence
Source: House of Commons Library (2019)





What information is shown here?

The information on this page looks at the index of 'Access to Health Assets and Hazards' (AHAH) Version 2, a multidimensional index produced by the CDRC that measures how 'healthy' neighbourhoods are by looking at accessibility and geographical determinants of health. It combines indicators under four different domains of accessibility:

- Retail environment: access to fast food outlets, pubs, off-licences, tobacconists, gambling outlets,
- Health services: access to GPs, hospitals, pharmacies, dentists, leisure services, and
- Physical environment: access to Blue Spaces, Green Spaces - Active, Green Spaces – Passive (total green space areas available to each postcode in a range of a 900-metre buffer prior to creating LSOA averages),
- Air Quality: three air pollutants (Nitrogen Dioxide, Particulate Matter 10 and Sulphur Dioxide).

The information boxes on the top right show the score on each of the four domains of accessibility and the overall AHAH index score for Farley Hill. A higher score indicates a poorer health-related environment.

The bar chart on the right shows a detailed breakdown of the inputs for the retail environment and health services domains all of which show the mean distance in kilometres to each of these outlets and services.

For full notes, methodology, and limitations please see <https://data.cdrc.ac.uk/dataset/ahah2> for more details.

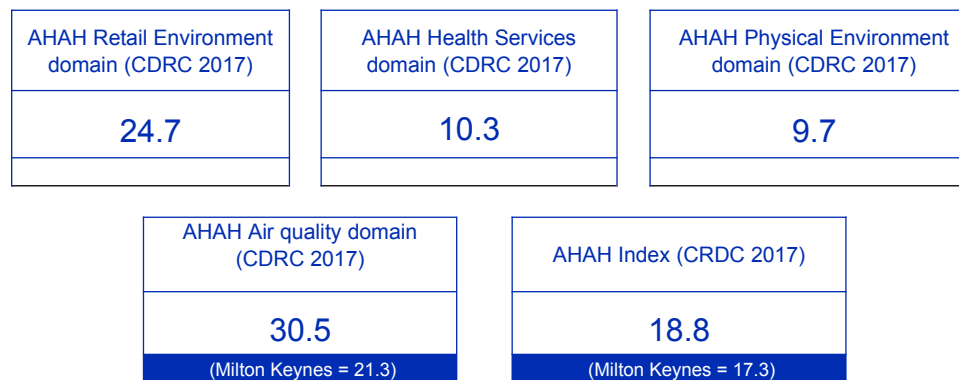
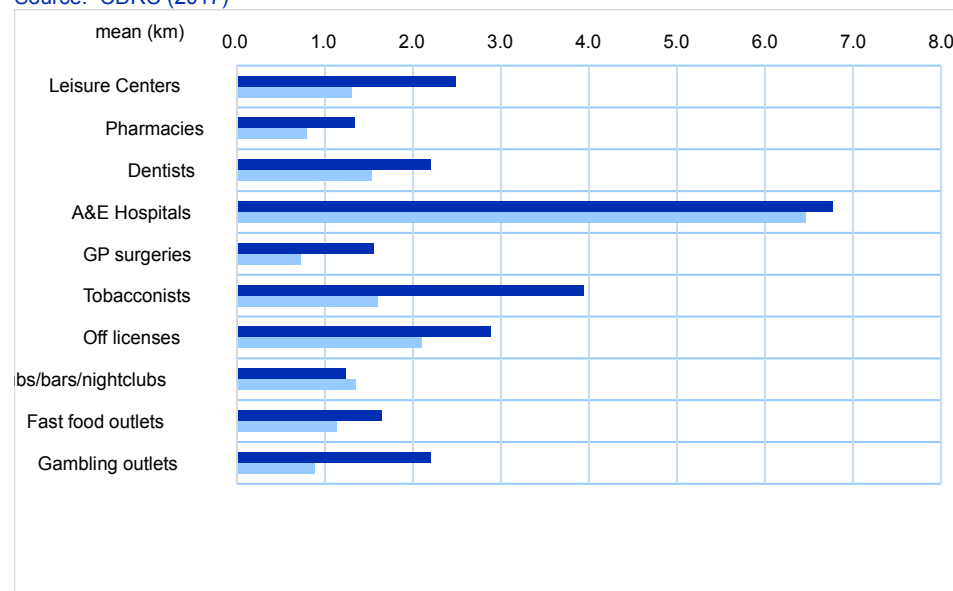


Figure: Inputs for retail environment and health services domain
Source: CDRC (2017)





What information is shown here?

The information boxes and chart on the right show the education levels of residents in Farley Hill, showing the number and proportion of adults (aged 16+) by highest level of qualification. *Note, figures in the table and charts may not add up to 100% because they do not include figures for those for who with other qualifications or unknown qualifications.*

The Chart on the bottom left shows the proportion of people turning 18 between 2010-11 and 2014-15 who went on to enter higher education.

People with no qualifications	People with highest qualification level 1	People with highest qualification level 2	People with highest qualification level 3
2,440	1,245	1,245	895

People with highest qualification level 4+ (degree)	'Level 1' qualifications are equivalent to a single O-level, GCSE or NVQ. 'Level 2' qualifications are equivalent to five O-levels or GCSEs. 'Level 3' qualifications are equivalent to two A levels. 'Level 4' qualifications are equivalent to degree level or higher.
1,610	

Source: Census 2011

Figure: Participation in higher education (Proportion of a young cohort that has entered higher education by age 19)

Source: Office for Students (OFS)

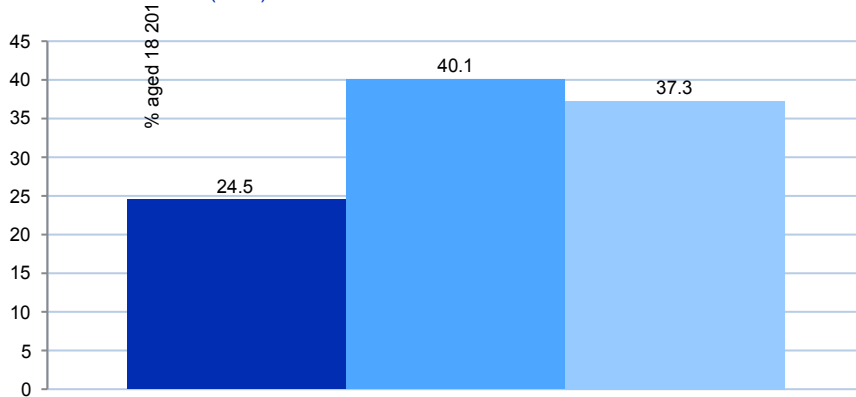
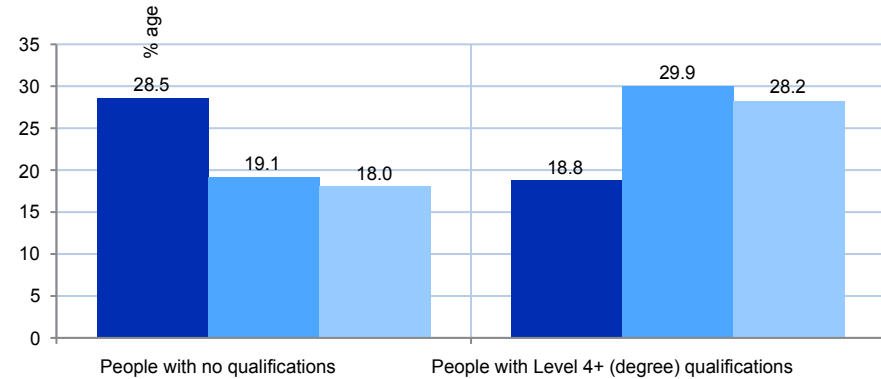


Figure: People with no qualifications and degree level qualifications

Source: Census 2011





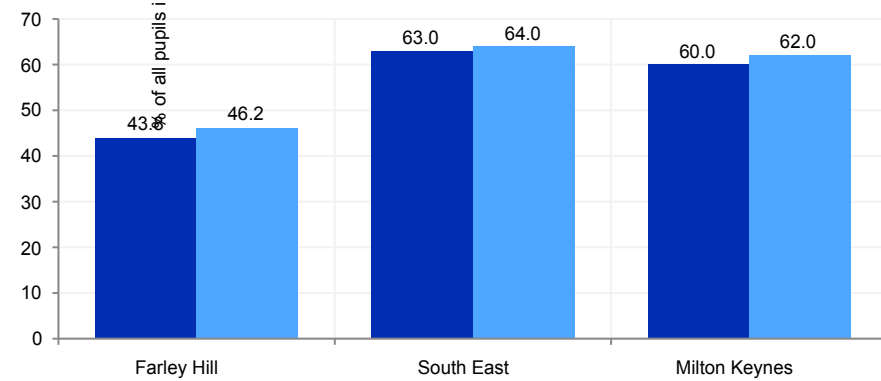
What information is shown here?

The information on this page shows the outcomes of children in the Early Years Foundation Stage (EYFS), a series of tests measuring children's progress in terms of Personal, Social and Emotional Development (PSED) and Communication, Language and Literacy (CLL). These are typically 5 year old pupils; however a minority of slightly older and younger pupils may have been assessed.

The new Early Years Foundation Stage Profile requires practitioners to make a best fit assessment of whether children are emerging, expected or exceeding against each of the new 17 Early Learning Goals (ELGs). Children have been deemed to have reached a Good Level of Development (GLD) in the new profile if they achieve at least the expected level in the ELGs in the prime areas of learning (personal, social and emotional development; physical development; and communication and language) and in the specific areas of mathematics and literacy. These are 12 of the 17 ELGs. The Department for Education has also introduced a supporting measure which measures the total number of points achieved across all 17 ELGs and reports the average of every child's total point score.

The chart on the right shows the percentage of pupils achieving 17 ELG and the percentage of pupils achieving a good level of development.

Figure: Early years foundation stage profile
Source: Department for Education (2013-2014)





What information is shown here?

The chart on the top right show the education levels of pupils in Farley Hill, showing the examination results at Key Stage 1 (tests set at aged 7) Key Stage 2 (tests set at aged 11) and Key Stage 4 (GCSEs).

The figures show the Average Point Score of pupils from each of the Key Stage examinations. This adjusts for high achieving pupils as well as pupils achieving expected levels.

The chart on the top right shows Average Point Score (across all examinations) per pupil at Key Stage 1 and Key Stage 2. The chart on the bottom right compares the gap in Average Point Score at Key Stage 4 (GCSE) per pupil between Farley Hill and the national average over time. The gap is measured as the point difference against the England average. Areas with a score of greater than 1 are performing better than the national average, while areas with a score of less than 1 are performing below.

Figure: Pupil attainment at Key Stage 1 and Key Stage 2
Source: Department for Education (2013-2014)

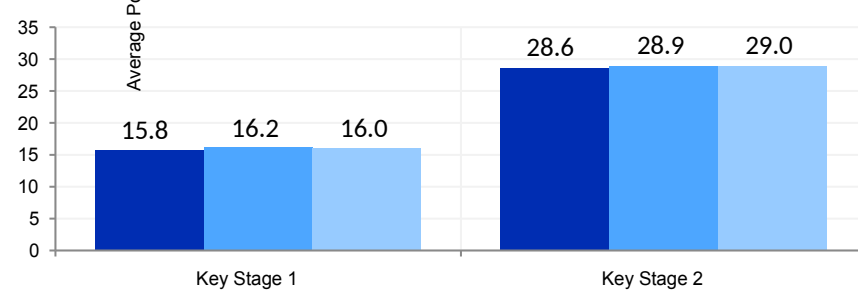


Figure: Pupil attainment at Key Stage 4
Source: Department for Education (2013-2014)

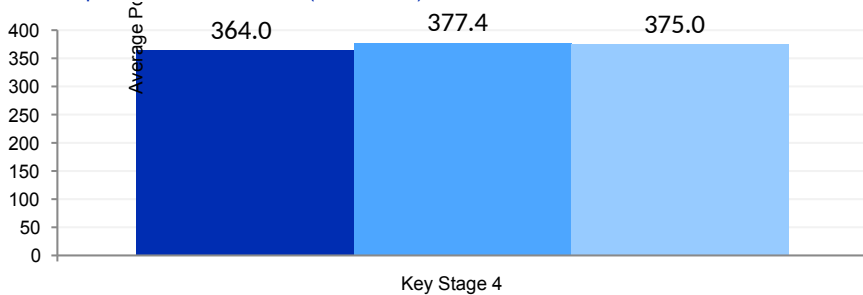
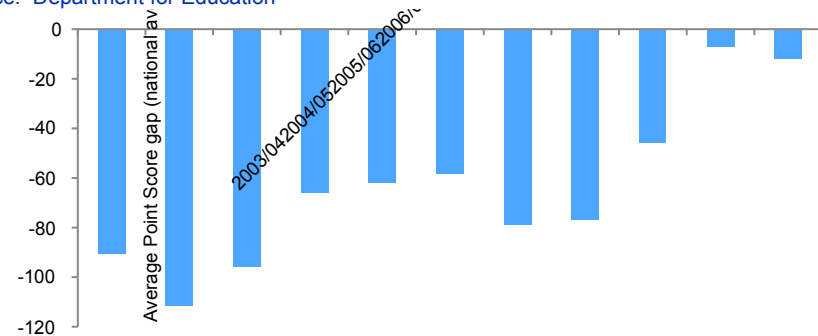


Figure: Gap in pupil attainment at Key Stage 4 (difference from the national average)
Source: Department for Education



Scores above 0 show an improvement on the National average. Average Point Score is made up of all GCSE examinations sat.

What information is shown here?

The information on this page looks at four types of income category: average household income; average equivalised household income after housing costs; households living in fuel poverty and median net equivalised household PAYE and benefits income. Fuel poverty is said to occur when in order to heat its home to an adequate standard of warmth a household needs to spend more than 10% of its income on total fuel use.

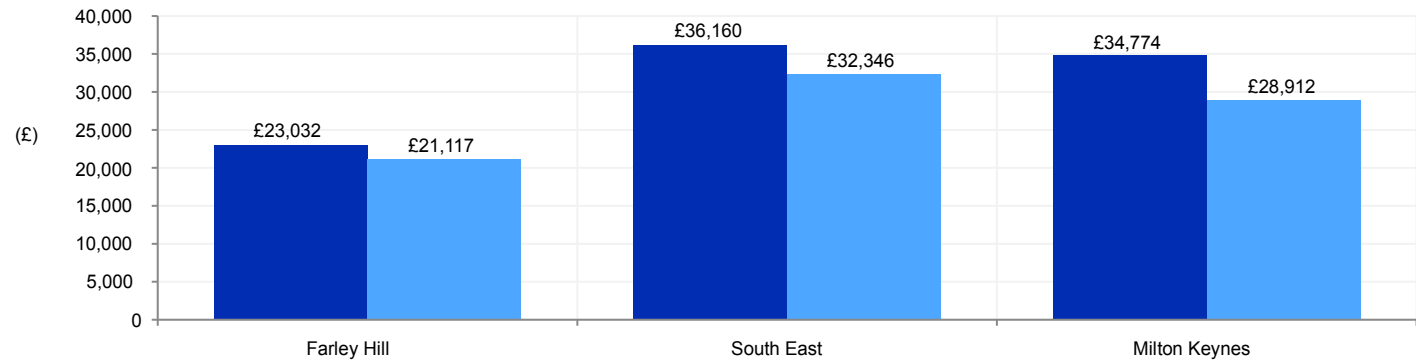
The information boxes on the top right provide an estimate of the number of households in Farley Hill below the poverty line and an estimate for the number of households in fuel poverty.

The chart on the right shows the average annual household income estimate (equivalised to take into account variations in household size) across Farley Hill and comparator areas before and after housing costs.

Annual household income (Office for National Statistics 2015/16)	Annual household income, after housing costs (Office for National Statistics 2015/16)	Households living in 'Fuel Poverty' Department for Energy and Climate Change (2016)
£31,214	£21,117	535

Median net equivalised household PAYE and benefits income (Office for National Statistics 2015/16)
£20,019

Figure: Annual household earnings (£)
Source: Office for National Statistics (2015/16)



What information is shown here?

The levels of private debt, in the form of unsecured loans and mortgage debt per head, for Farley Hill are displayed here.

These figures, available at postcode sector level, are published by UK Finance and account for around 60% of borrowing in the UK. OCSI have modelled this data to Output Areas using an address based lookup from postcode sector to Output Area in combination with the number of local households and the local population.

The personal debt figure is the total amount of borrowing outstanding on customer accounts divided by the population aged 18+. Personal debt includes all unsecured loans such as credit cards, credit for new cars (eg when buying on finance) and other personal loans. Student debt is not included.

The mortgage debt figure is the total borrowing outstanding on customer accounts for residential mortgages divided by the total number of households.

The SME debt figure is the total amount of borrowing outstanding on customer accounts for Small and Medium-sized enterprises divided by the population aged 18+.

Personal debt per head
£0.7

Residential mortgage debt per head
£28.4

SME lending debt per head
£0.4

Source: UK Finance (Sept-2018)

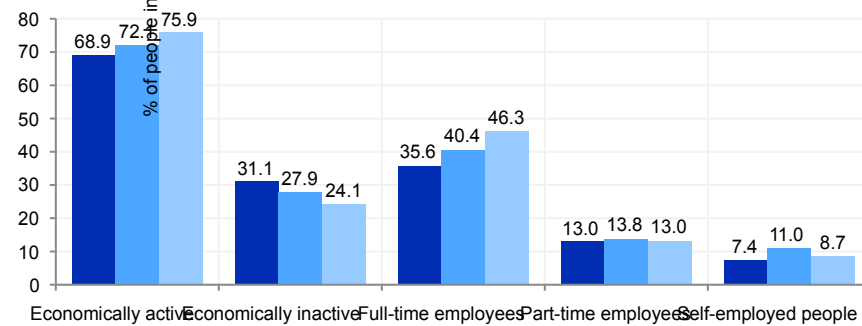
What information is shown here?

The information on this page shows economic activity breakdowns for adults aged 16-74 in Farley Hill.

The data in the information boxes shows the number and proportion of residents who are economically active, with breakdowns for those working part time, full time or are self-employed (*note, these figures do not add up to all those economically active as it excludes those economically active who are unemployed or full-time students*).

Economically active	Full-time employees	Part-time employees	Self-employed people	Economically inactive
5,428	2,803	1,025	582	2,452
Source: Census 2011				

Figure: Economic Activity
Source: Census 2011



What information is shown here?

The information on this page shows breakdowns of the main industry sectors people in Farley Hill are working in, and their occupational status.

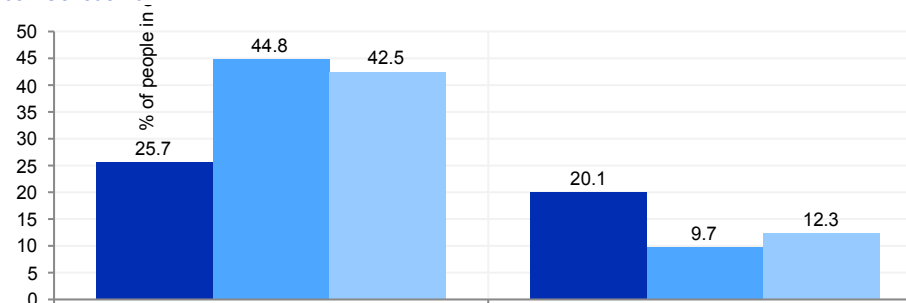
The data in the top information boxes shows the three largest employment sectors for residents in the local area, also the number and percentage of employed people working in each of these sectors. The lower information boxes and the chart on the right show the numbers of residents in Farley Hill by type of occupation (e.g., managers, professional, administrative).

Largest employment sector		Second largest employment sector		Third largest employment sector	
Retail		Health & social work		Education	
Managerial occupations	Professional (or associate) occupations	Administrative or secretarial occupations	Skilled trades occupations	Elementary occupations	
310	915	455	585	955	

Source: Census 2011

Figure: People in professional and elementary occupations

Source: Census 2011



n managerial, professional or associate professional occupation People working in elementary occupations

What information is shown here?

The information on this page shows the number of vacant jobs in Farley Hill compared against the overall unemployment levels in the area.

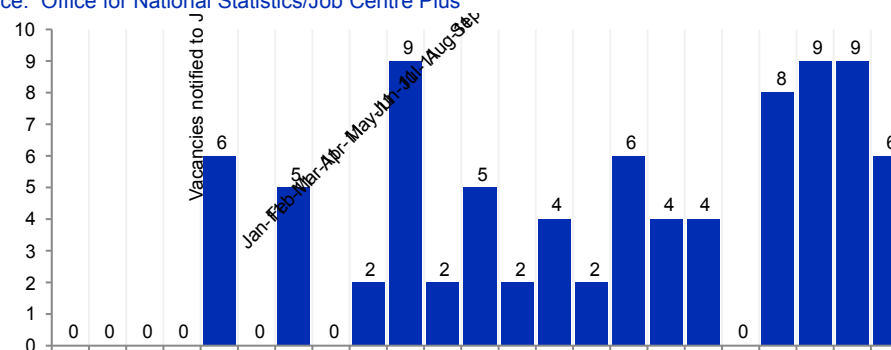
The 'Unemployment to 'Available Jobs' ratio, shown in the information box on the right and the line chart below is the total number of people claiming unemployment benefit (Jobseekers Allowance) divided by the total number of job vacancies notified to Jobcentre Plus expressed as a ratio.

The bar chart on the bottom right shows month-on-month changes in the number of job vacancies notified to Jobcentre Plus, that are located in the area covering Farley Hill (based on postcode location of the job). *Note, this data was last updated by Jobcentre Plus for November 2012.*

Figure: Ratio of unemployment (JSA claimants) to jobs (vacancies notified to Jobcentre Plus)
Source: Office for National Statistics/Job Centre Plus, Department for Work and Pensions

Unemployment to 'Available Jobs' ratio	Source: Job Centre Vacancies - Office for National Statistics/Jobcentre Plus (Nov-12), Jobseekers Allowance claimant count – Department for Work and Pensions (Nov-12)
13.93 claimants per job	

Figure: Total number of vacancies notified to Job Centre
Source: Office for National Statistics/Job Centre Plus



What information is shown here?

The information in this section shows the concentration of workforce jobs in Farley Hill. Workforce jobs are taken from the Business Register and Employment Survey (BRES) which publishes employee and employment estimates based on a survey of approximately 80,000 businesses and weighted to represent all sectors of the UK economy.

The information boxes show the three largest industry groups for workforce jobs based in Farley Hill. The bar chart on the top right shows the change in 'Jobs Density' (the number of jobs as a % of working age population) across Farley Hill over time. The bar chart on the bottom right shows the share of jobs broken down by public and private sector.

Largest industry sector	Second largest industry sector	Third largest industry sector
Education	Health	Arts, entertainment, recreation & other services

Source: Business Register and Employment Survey (BRES) (2017)

Figure: Jobs Density (jobs as a % of working age population) (2017)

Source: Business Register and Employment Survey (BRES)

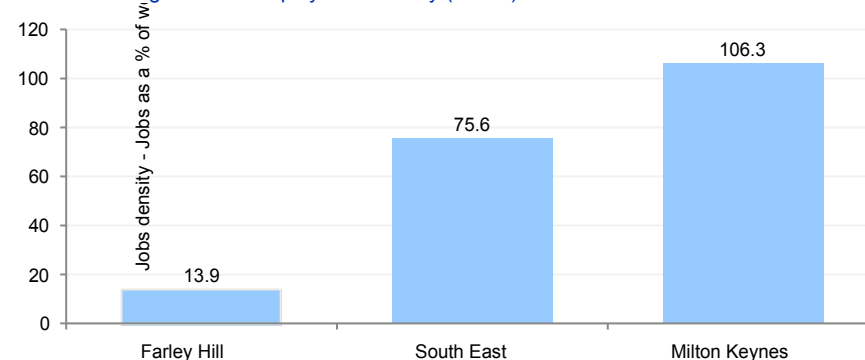
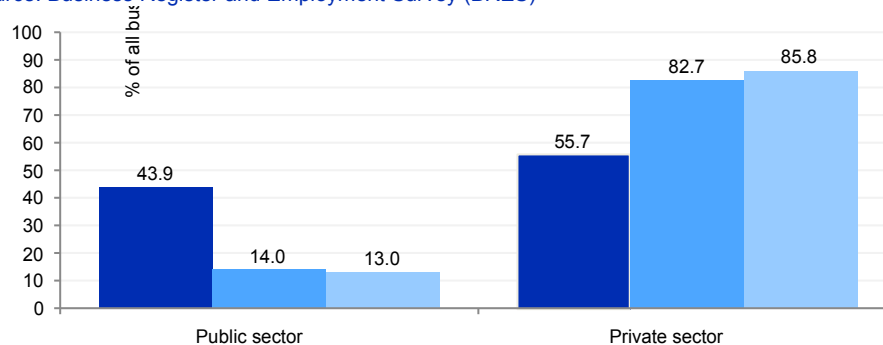


Figure: Jobs by public sector/private sector (2017)

Source: Business Register and Employment Survey (BRES)



What information is shown here?

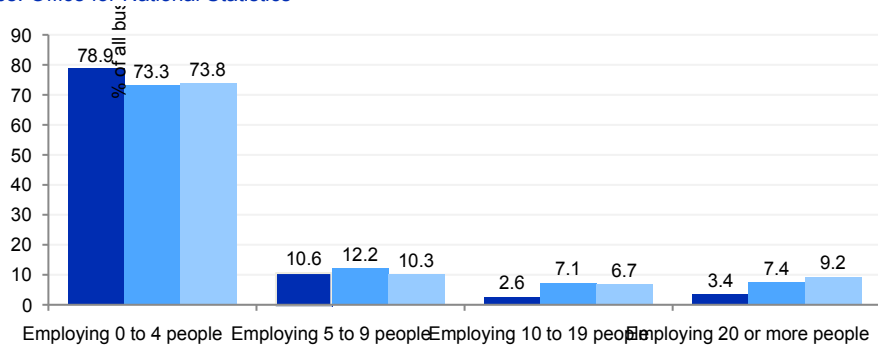
The information in this section shows the concentration of 'local business units' in Farley Hill. 'Local business units' are counts of businesses based on the location of an operational unit. Though larger businesses such as supermarket chains may have their head office in a large city, these figures measure all subsidiaries of that larger enterprise based on where subsidiaries are located. The figures cover all business eligible for VAT (1.7 million businesses in the UK are registered for VAT). These businesses are categorised into 16 broad industry groups derived from the Standard Industrial Classification (UKSIC (2003)).

The information boxes show the three largest industry groups for businesses based in Farley Hill. The line chart shows the change in the number of businesses per head of the population across Farley Hill over time. The bar chart shows the count of local business broken down by size of business. Businesses are broken down into four employment size bands based on the number of paid employees (0-4, 5-9, 10-19 and 20+ paid employees).

Largest business sector	Second largest business sector	Third largest business sector
Construction	Transport	Health

Source: Office for National Statistics (2017)
 Figure: Businesses (VAT based local units) per 10,000 working age population
 Source: Office for National Statistics

Figure: Businesses (VAT based local units) by employment size band (2017)
 Source: Office for National Statistics





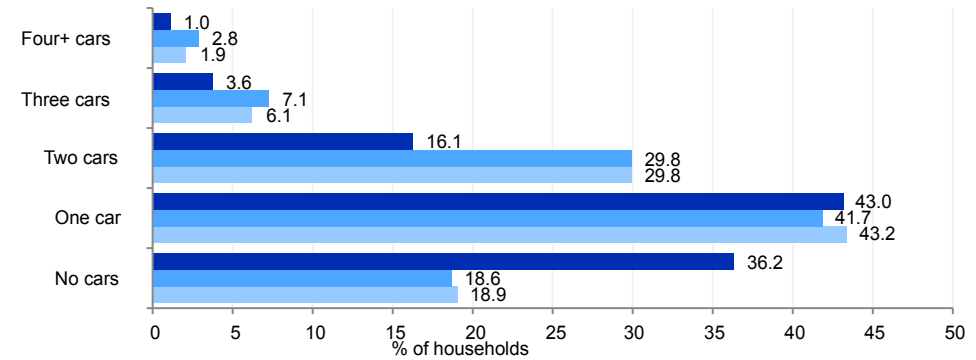
What information is shown here?

The information on the right shows details of the number of cars and vans in each household in Farley Hill. The count of cars or vans in an area is based on details for private households only. Cars or vans used by residents of communal establishments are not counted.

The information boxes show the number of households by number of cars owned across Farley Hill, while the charts show the same information (expressed as a percentage) against comparator areas.

No cars	One car	Two cars	Three cars	Four + cars
1,490	1,775	665	150	40
Source: Census 2011				

Figure: Car ownership
Source: Census 2011





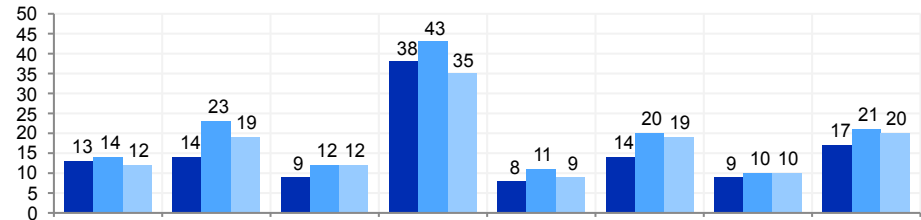
What information is shown here?

The information on this page shows the accessibility of key services and amenities to people living in Farley Hill. Accessibility is measured both in terms of distance and travel times to key services.

The information boxes on the right show average distances (in kilometres) to five key services. The chart on the right shows average travel times in minutes to key services when walking or taking public transport.

Average road distance from Job Centre	Average road distance from Secondary School	Average road distance from GP	Average road distance from Pub	Average road distance from Post Office
1.9km	2.6km	0.7km	0.9km	0.9km
Source: Road distances - Commission for Rural Communities: Distance to Service dataset (2010)				

Figure: Average travel time (mins) by walking or public transport to the nearest key service
Source: Department for Transport: Core Accessibility Indicators (2016)





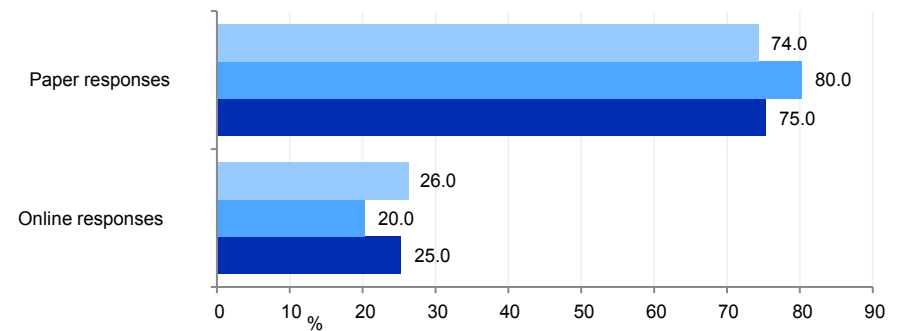
What information is shown here?

The information on this page shows two measures of access to the internet. The first measure shows information on broadband take-up, speeds and availability. It has been produced by Ofcom and contains data provided by communications providers. The data shows the average broadband line speed in Farley Hill and the proportion of broadband connections in Farley Hill which with low broadband speeds (less than 2 Mbit/s).

The chart on the right shows the proportion of people who responded to the 2011 Census online, compared with the proportion that filled in the Census form on paper in Farley Hill. This is a proxy measure of digital engagement as areas with a high proportion of online Census responses are more likely to be digitally engaged than those in areas with low levels of online responses.

Connections with low broadband speeds (less than 2 Mbit/s)	Average broadband download speed (Mbit/s)	Average broadband upload speed (Mbit/s)
32	63.05	5.55
Source: Ofcom 2017		

Figure: Census online and paper responses
Source: Census 2011





What information is shown here?

The information on this page looks at the characteristics of neighbourhoods across Farley Hill as defined using the Output Area Classification (OAC). OAC classifies every area in the country based on a set of socio-demographic characteristics, to provide a profile of areas to identify similarities between neighbourhoods. The information boxes on the right show the number and proportion of neighbourhoods in Farley Hill that fall within the eight supergroup categories, detailed below. The chart on the right shows the proportion of areas falling within supergroup categories across Farley Hill and comparators.

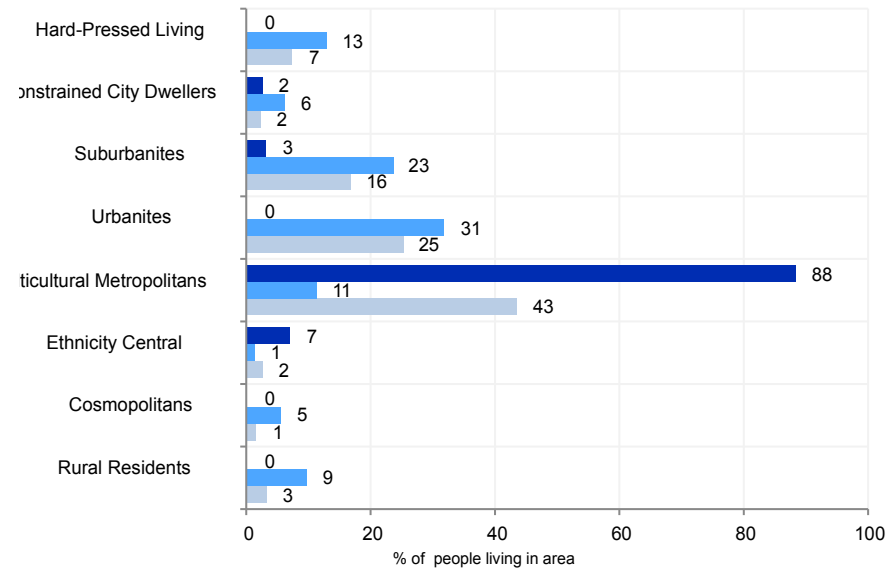
Rural residents	Cosmopolitans	Ethnicity central	Multicultural metropolitans
0	0	744	9,834
Urbanites	Suburbanites	Constrained city dwellers	Hard-pressed living
0	320	267	0

Source: Office for National Statistics Output Area Classification 2011

Rural residents	Rural areas, sparsely populated, above average employment in agriculture, higher number owning multiple cars, an older married population, a high provision of unpaid care and an above average number of people living in communal establishments.
Cosmopolitans	Residing in densely populated urban areas, high ethnic integration, high numbers of single young adults without children including students, high public transport use, above average qualification levels
Ethnicity central	Concentrated in Inner London and other large cities, high ethnic diversity, high proportion of rented accommodation, high proportion of people living in flats, low car ownership.
Multicultural metropolitans	Concentrated in larger urban conurbations in the transitional areas between urban centres and suburbia, high proportion of BME groups, high proportion of families.
Urbanites	Predominantly in urban areas with high concentrations in southern England. More likely to live in either flats or terraces that are privately rented.
Suburbanites	Located on the outskirts, in areas with high owner occupation, high numbers of detached houses, low unemployment, high qualifications and high car ownership.
Constrained city dwellers	Higher proportion of older people, households are more likely to live in flats and to rent their accommodation, and there is a higher prevalence of overcrowding, higher proportion of people in poor health, lower qualification levels and high unemployment
Hard-pressed living	Mostly on the fringe of the UK's urban areas, particularly in Wales and the North of England. High levels of people in terraced accommodation, high unemployment, low ethnic diversity, high levels of people employed in manufacturing

Figure: Area Classification 2011: Proportion of people living in different types of neighbourhood (by classification type)

Source: Output Area Classification (2011)



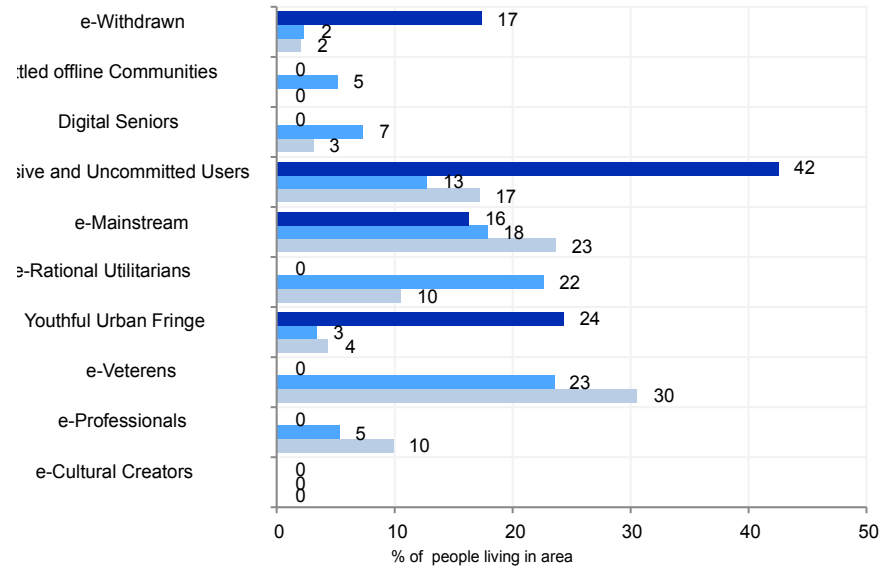


What information is shown here?

The information on this page looks at the classification of neighbourhoods across Farley Hill in terms of how they interact with the Internet. The Consumer Data Research Centre (CDRC) have developed an Internet User Classification using data from the British Population Survey (BPS), which provides info on the behavioural characteristics of the population regarding various aspects of internet use, which could be linked with demographic data from the census and supplemented with data from online retailers, on online transactions and infrastructure data from OfCom on download speed. Every LSOA in England has been classified into 10 groups (summarised in the table below). The chart on the right shows the proportion of areas falling within each group across Farley Hill and comparators.

Source: Alexiou, A. and Singleton, A. (2018). *ESRC Consumer Data Research Centre; Contains National Statistics data Crown copyright and database right (2017); Ofcom data (2016). CDRC data from Data Partners (2017)*

Figure: Internet User Classification 2018: Proportion of people living in different types of neighbourhood (by classification type)



e-Cultural Creators	High levels of Internet engagement, particularly regarding social networks, communication, streaming and gaming, but relatively low levels of online shopping, besides groceries.
e-Professionals	High levels of Internet engagement, and comprises fairly young populations of urban professionals, typically aged between 25 and 34. They are experienced users and engage with the Internet daily and in a variety of settings.
e-Veterans	Affluent families, usually located within low-density suburbs, with populations of mainly middle-aged and highly qualified professionals. Higher levels of engagement for information seeking, online services and shopping, less for social networks or gaming.
Youthful Urban Fringe	Reside at the edge of city centres and deprived inner city areas, ethnically diverse, young, large student and informal household populations, access via mobile devices. High levels of Internet engagement are average over-all, with high levels of social media usage
e-Rational Utilitarians	Comprising mainly rural/semi-rural areas with higher than average retired populations, constrained by poor infrastructure. Users undertake online shopping, the Internet is used as a utility rather than a conduit for entertainment.

e-Mainstream	Exhibit typical Internet user characteristics in heterogeneous neighbourhoods at the periphery of urban areas or in transitional neighbourhoods.
Passive and Uncommitted Users	Limited or no interaction with the Internet. They tend to reside outside city centres and close to the suburbs or semi-rural areas. Higher levels of employment in semi-skilled and blue-collar occupations.
Digital Seniors	Typically White British, retired and relatively affluent. Average use of the Internet, typically using a personal computer at home. Despite being infrequent users, they are adept enough to use the Internet for information seeking, financial services and online shopping.
Settled offline Communities	Elderly, White British, in semi-rural areas. They undertake only limited engagement with the Internet, they may have only rare access or indeed no access to it at all.
e-Withdrawn	Least engaged with the Internet. Deprived neighbourhoods of urban regions. Highest rate of unemployment and social housing among all Lowest rates of engagement in terms of information seeking and financial services, as well as the lowest rate in terms of online access via a mobile device.



Communities and environment: Neighbourhood satisfaction & local participation (1) 67

What information is shown here?

The information on this page shows different measures of people's satisfaction with their neighbourhood and their sense of community cohesion in the neighbourhood. It also shows different measures of people's participation in volunteering and political decision making in the local area. In addition the information box on the far bottom right shows the number of active charities per 1,000 population.

Figures are self-reported and taken from the Place Survey. *The Place survey is collected at Local Authority level so does not include neighbourhood information, and ceased nationally in 2008 so is increasingly out of date.*

"People from different backgrounds get on well together in the local area"	People who feel that they belong to their neighbourhood	People who are satisfied with local area as a place to live	Aged 65+ "satisfied with both home and neighbourhood"
73%	48%	72%	80%
People involved in decisions that affect the local area in the past 12 months	People who believe they can influence decisions in their local area	People who have given unpaid help at least once per month over the last 12 months	Active charities
15%	36%	24%	1.4 per 1,000 population
Source: Place Survey (2008), Active Charities - National Council for Voluntary Organisations (NCVO) (2009). Note all information is collected at Local Authority level			

Figure: Indicators of community strength
Source: Place Survey (2008)

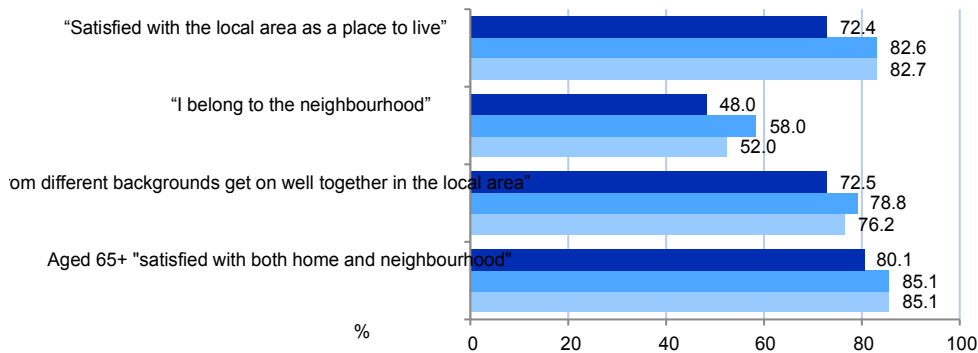
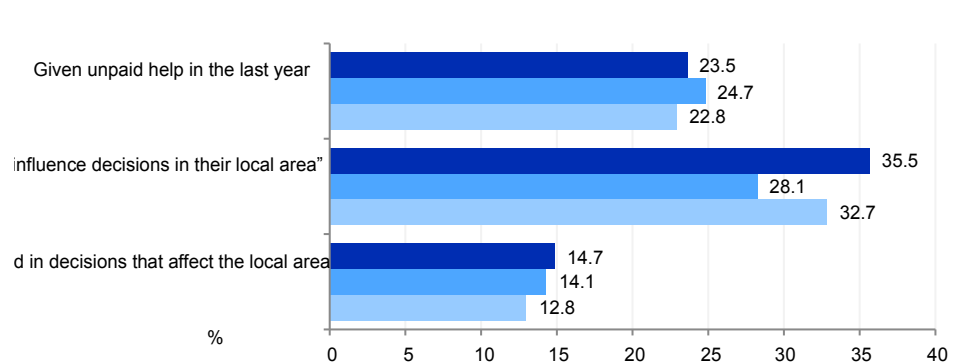


Figure: Indicators of civic engagement
Source: Place Survey (2008)





What information is shown here?

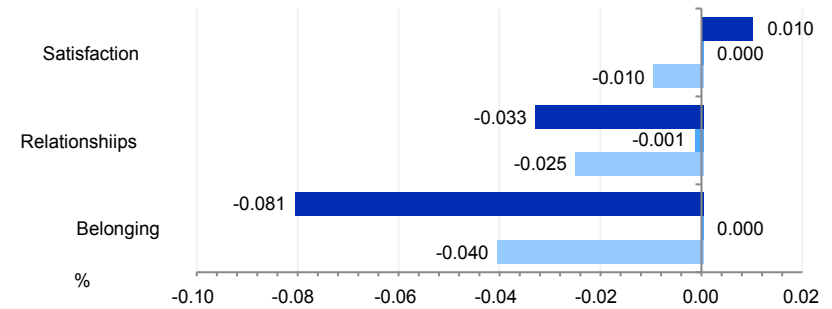
The page shows the Community Dynamics indicators for Farley Hill. The Community Dynamics data set (<https://www.communitydynamics.social-life.co/>) has been developed by Social Life with the aim of quantifying how people feel about the area they live in.

By modelling responses from the annual Community Life Survey and Understanding Society Survey to Output Areas, Social Life have created small area measures of: **strength of local social relationships, strength of belonging to a local area and satisfaction with a local area as a place to live**. Positive values represent greater belonging/relationship strength/satisfaction than the national average. Negative figures represent less belonging/relationship strength/satisfaction than the national average.

Please note that these indicators have been created by combining the survey responses of samples of the population and modelling these to Output Areas by linking survey sample demographics to the demographics of Output Areas. As a result, many implicit assumptions are built into the data which will not hold for all areas. The values presented here offer an indication of community belonging, strength and satisfaction rather than an absolute measure.

The fourth information box shows the valid voter turnout (%) at the most recent Local Council Elections. Because the electoral cycle varies in different parts of the country (with associated impacts on turnout) the turnout figures from previous years have been adjusted either upwards or downwards from the 2018 average. This is in order to reflect variation in turnout across different years. For example if turnout was 30% in 2017 and 35% in 2018 then each area in 2017 would be revised upwards using the following calculation $35/30 = 1.166 \times 2017$ turnout.

Local social relationships	Belonging	Satisfaction with local area as a place to live	Voter Turnout at Local Elections (%)
-0.033	-0.081	0.01	31
Figure: Community Dynamic scores for belonging, relationships and satisfaction Source: Social Life (modelled from the annual Community Life Survey), 2015/2016			Electoral Commission (2018)





What information is shown here?

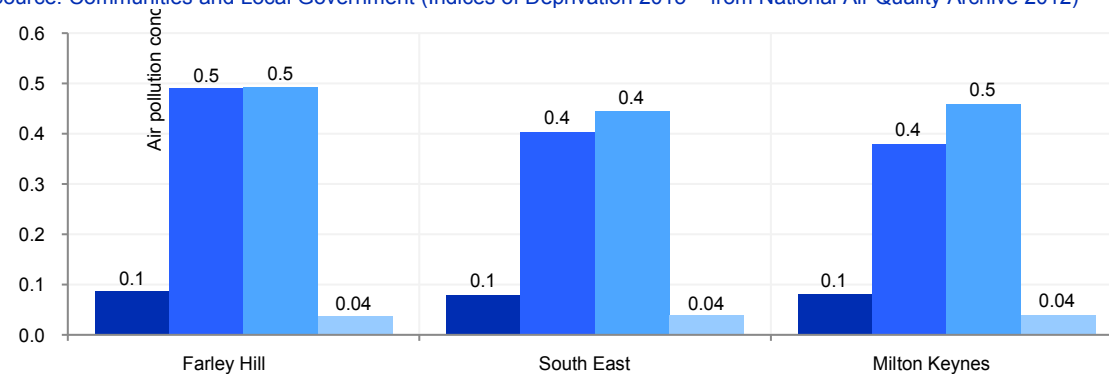
The information on this page shows background concentrations from four air pollutants: nitrogen dioxide, benzene, sulphur dioxide and particulates. The air quality data was collected for 2012 on a 1km grid and obtained from the UK National Air Quality Archive for use in the Indices of Deprivation 2015. A higher score indicates a higher concentration of the pollution with a score of greater than 1 indicating that the levels of pollution exceed national standards of clean air.

Benzene concentrations	Nitrogen Dioxide concentrations	Particulates (PM10) concentrations	Sulphur Dioxide concentrations
0.09	0.5	0.5	0.04

Source: Communities and Local Government (Indices of Deprivation 2015 - from National Air Quality Archive 2012)

Figure: Air pollution concentrations for four pollutants

Source: Communities and Local Government (Indices of Deprivation 2015 – from National Air Quality Archive 2012)





What information is shown here?

Ordnance Survey (OS) publish the locations and extent of green spaces that are likely to be accessible to the public. The data include the following types of green spaces: allotments or community growing spaces, bowling greens, cemeteries, religious grounds, golf courses, other sports facilities, play spaces, playing fields, public parks or gardens and tennis courts.

OCSI have intersected OS Open Greenspaces data with Output Area boundaries to produce data for the greenspace per standard geographical area: (eg OA, LSOA, LA).

Two green space measures are shown here. The **total green space** (which includes all types of green space) and the **public parks and gardens green space** (only public parks and gardens).

Large rural areas such as National Parks are not included in the OS Greenspace dataset. Religious grounds are included where there is seen to be a significant amount (>500m²) of accessible greenspace. Sports stadiums and grounds which are primarily for spectating rather than participating in sports are not included. Playing fields should only be included in OS Greenspace dataset where they are used by the public at least some of the time. Playing fields such as school fields which are entirely enclosed and only for use of the school, would not be expected to be included.

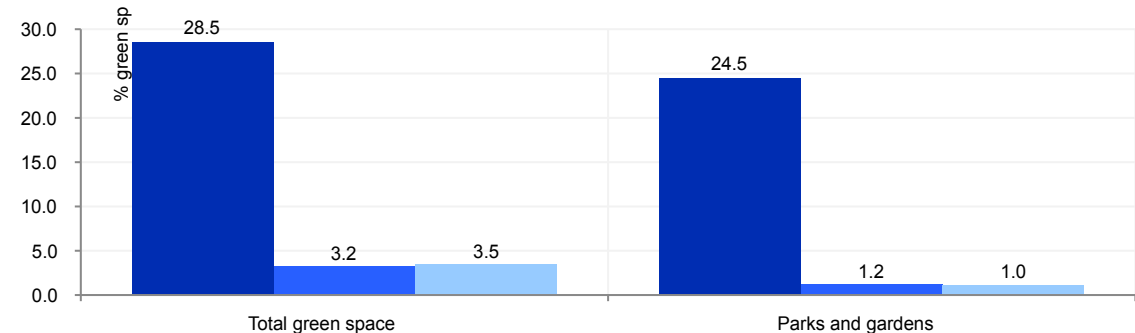
Wooded areas that function as public parks (i.e. are freely accessible to the public in their entirety and are managed for recreation) should be included, however, the constraints of the capture method employed to create the data mean that in many cases these may not yet be included.

OS data © Crown copyright and database right 2017

Total green space	Public parks and gardens greenspace
28.54%	24.48%
Source: OS data © Crown copyright and database right 2017	

Figure: Percentage of green space coverage

Source: OS data © Crown copyright and database right 2017





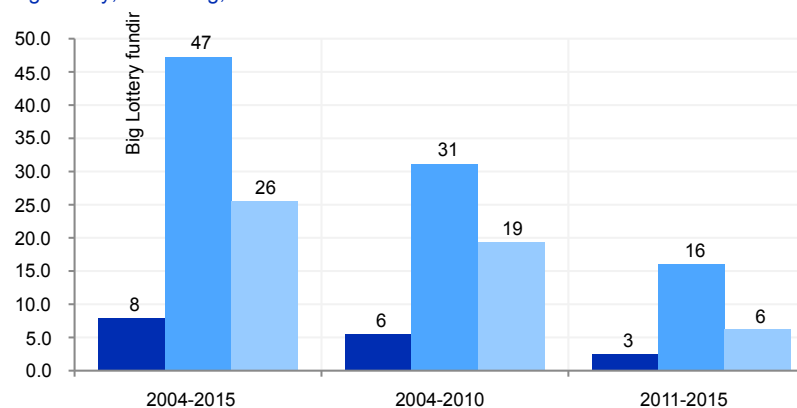
What information is shown here?

Figures on this page are taken from data on grants made to projects and organisations in local areas in the UK by the Big Lottery Fund, modelled down to standard statistical geographies from ward grants data published by Big Lottery in conjunction with the 360Giving initiative. Big Lottery used the 360Giving standard to produce a dataset of all the grants made from 2004-2015 as well as 2004-2010 and 2011-2015. Note the (N) figure refers to total funding in the area (in £1000s) over the period.

For more information on the 360Giving data format and initiative please visit www.threesixtygiving.org/

Big Lottery funding (2004-2015)	Big Lottery funding (2004-2010)	Big Lottery funding (2011-2015)
£98k	£68k	£31k
Source: Big Lottery, 360Giving		

Figure: Big Lottery grant funding per head, 2004-2015
Source: Big Lottery, 360Giving, 2015



How we have identified the “Farley Hill” area

This report is based on the definition of the “Farley Hill” area (this area can be viewed on the Local Insight map, through finding the area on the ‘show services’ dropdown in the top left hand corner of the map. We have aggregated data for all the neighbourhoods in “Farley Hill” to create the data used in this report.

Alongside data for the “Farley Hill” neighbourhood we also show data for selected comparator areas.

Data in this report is based on regularly updated open data published by government sources

All the data in this report is based on open data published by more than 50 government agencies, collected and updated by OCSI on weekly basis. Data is updated on regular basis, with the reports and mapped data on the website reflecting the latest available data.

Details of the individual datasets are provided on the pages where the data is presented, with information on dates and sources presented alongside the charts and tables. On the website, information about each source is available on the popup “About the indicator” link at the top-right of the map.

Standard geographies used in this report

Super Output Areas (SOAs): SOAs are a statistical geography created for the purpose of presenting data such as the Census, Indices of Deprivation, and other neighbourhood statistics. There are two layers to the SOA geography: ‘lower layer’ (LSOA) and ‘middle layer’ (MSOA). SOAs are designed to produce areas of roughly equal population size - 1,500 people for LSOAs and 7,200 for MSOAs. The majority of data used in this report is based on LSOA boundaries; of which there are 32,844 in England (there were changes to around 4% of LSOA definitions in Census 2011).

Output Areas (OAs): OAs are a more detailed statistical geography than SOAs, with each covering around 300 people, or 120 households. There are 171,372 OAs in England (there were changes to around 5% of OA definitions in Census 2011).

Wards: A small number of datasets are published at ward level. These are on average four times larger than LSOAs. Data is less detailed than LSOA level datasets and wards vary greatly in size, from less than 200 residents (Isles of Scilly), to more than 36,000 residents (in Sheffield).

Total population and by age	Mid-Year Estimates (ONS) 2017	Annually (published November 2017)	Nov-19
Population by ethnicity	Census 2011	10 yearly (published August 2013)	2023
Population by country of birth	Census 2011	10 yearly (published August 2013)	2023
Population by household language	Census 2011	10 yearly (published August 2013)	2023
People who have moved address within the last 12 months	Census 2011	10 yearly (published August 2013)	2023
National Insurance no. registrations of overseas nationals	DWP 2018/19	Annually (published May 2019)	June-20
Level of inward and outward migration (by age)	ONS 2010	Irregular (published 2011)	No publication date confirmed
Population by household composition	Census 2011	10 yearly (published August 2013)	2023
Population by religion	Census 2011	10 yearly (published August 2013)	2023
Unemployment benefit (JSA and Universal Credit)	DWP June-19	Monthly (published July)	Aug-19
Jobseekers Allowance claimants, claiming for over 12 months	DWP June-19	Monthly (published July)	Aug-19
Youth unemployment (18-24 receiving JSA or Universal Credit)	DWP June-19	Monthly (published July)	Aug-19
Older person unemployment (50+ receiving JSA or Universal Credit)	DWP June-19	Monthly (published July)	Aug-19
Unemployment benefit (JSA and Universal Credit), male	DWP June-19	Monthly (published July)	Aug-19
Unemployment benefit (JSA and Universal Credit), female	DWP June-19	Monthly (published July)	Aug-19
Working age workless benefit claimants	DWP Nov-18	Quarterly (published May 2019)	Aug-19
Incapacity Benefit claimants	DWP Nov-18	Quarterly (published May 2019)	Aug-19
Disability Living Allowance claimants	DWP Nov-18	Quarterly (published May 2019)	Aug-19
Attendance Allowance claimants	DWP Nov-18	Quarterly (published May 2019)	Aug-19
Personal Independence Payments (PIP)	DWP Apr-19	Quarterly (published June 2019)	Sep-19
Universal Credit by Conditionality	DWP June-19	Monthly (published July)	Aug-19
Working age DWP Benefit claimants	DWP Nov-16	Quarterly (published May 2017)	Discontinued
Female working age benefit claimants	DWP Nov-16	Quarterly (published May 2017)	Discontinued
Male working age benefit claimants	DWP Nov-16	Quarterly (published May 2017)	Discontinued
Income Support (IS) claimants	DWP Nov-18	Quarterly (published May 2019)	Aug-19
Housing Benefit claimants	DWP Feb-19	Quarterly (published May 2019)	Aug-19
Universal Credit claimants	DWP June-19	Monthly (published May)	Jun-19
Indices of Deprivation (ID) 2015 by domain	CLG (Indices of Deprivation 2015)	Irregular (September 2015)	2019
Children in 'out of work' households	HM Revenue and Customs 2017	Annual (published December 2018)	Dec-19
Children in lone parent households	DWP 2012	Irregular	No publication date confirmed
Children in poverty	DWP 2016	Annually (published December 2018)	Dec-19
Child Wellbeing Index	CLG (Child Wellbeing Index 2009)	Irregular (published 2009)	No publication date confirmed
Private pensioner households with no car or van	Census 2011	10 yearly (published August 2013)	2023

Households of one pensioner	Census 2011	10 yearly (published August 2013)	2023
Pension credit claimants	DWP Nov-18	Quarterly (published May 2019)	Aug-19
State Pension total claimants	DWP Nov-18	Quarterly (published May 2019)	Aug-19
Loneliness index	Age UK 2011	Irregular (published January 2016)	No publication date confirmed
Mental health related benefits	DWP Nov-18	Quarterly (published May 2019)	Aug-19
Households suffering multiple deprivation	Census 2011	10 yearly (published August 2013)	2023
Household is not deprived in any dimension	Census 2011	10 yearly (published July 2014)	No publication date confirmed
Household is deprived in 1 dimension	Census 2011	10 yearly (published July 2014)	No publication date confirmed
Household is deprived in 2 dimensions	Census 2011	10 yearly (published July 2014)	No publication date confirmed
Household is deprived in 3 dimensions	Census 2011	10 yearly (published July 2014)	No publication date confirmed
People providing unpaid care	Census 2011	10 yearly (published August 2013)	2023
Unpaid care (50+ hours per week)	Census 2011	10 yearly (published August 2013)	2023
Dwelling type breakdowns	Census 2011	10 yearly (published August 2013)	2023
Housing tenure breakdowns	Census 2011	10 yearly (published August 2013)	2023
Average house prices by housing type	Land registry June-18 to May-19	Quarterly (published July 2019)	Oct-19
Households by Council Tax Band	Valuation Office Agency (VOA) 2017	Annually (published August 2017)	Under consultation
Housing affordability gap, average house prices and savings ratio	ONS House Price Statistics for Small Areas Oct16-Sep17; ONS earnings data 2015/2016	Irregular (published April 2018)	Earnings data April-19
Population density (persons / hectare)	ONS 2016	Annually (published November 2018)	Nov-19
Housing Environment	Census 2011	10 yearly (published August 2013)	2023
Dwelling size	Census 2011	10 yearly (published August 2013)	2023
Electricity and Gas consumption	Department for Business, Energy and Industrial Strategy, 2015	Irregular (published March 2017)	No publication date confirmed
Households not connected to the gas network	Department for Energy and Climate Change (DECC) 2017	Annually (published December 2018)	Dec-19
Energy efficiency ratings	DCLG. Data collected between 2009-2016	Irregular (published 2017)	No publication date confirmed
Communal establishments by type	Census 2011	10 yearly (published August 2013)	2023
Recorded crime offences	Police UK 2019	Quarterly (published July 2019)	Oct-19
Life expectancy	ONS 2013-2017	Irregular (published 2019)	No publication date confirmed
Healthy Life Expectancy	ONS 2009-2013	Annually (published 2016)	Delay in publication
Disability-free Life Expectancy	ONS 2009-2013	Annually (published 2016)	Delay in publication
Incidence of cancer by cause	ONS 2012-2016	Annually (published 2019)	Jun-20
Cancer mortality by cause	ONS 2013-2017	Annually (published 2019)	Jun-20
Number of people living in health deprivation 'hotspots'	CLG (Indices of Deprivation 2015)	Irregular (September 2015)	2019
People with a limiting long-term illness	Census 2011	10 yearly (published August 2013)	2023
Babies born with a low birth weight	ONS 2011-2015	Annually (published 2017)	Jan-19
Hospital admissions	ONS 2013/14 – 2017/18	Annually (published 2019)	Jun-20

Musculoskeletal conditions by type	Arthritis UK (2011)	Irregular (published 2017)	No publication date confirmed
“Healthy eating” (consumptions of 5+ fruit and veg a day), binge drinking and smoking	Health Survey for England 2006-2008	Irregular (published 2014)	No publication date confirmed
Children classified as obese	National Child Measurement Programme (NCMP) (2015/16 to 2017/18)	Irregular (published 2019)	No publication date confirmed
Adults classified as obese	Health Survey for England 2006-2008	Irregular (published 2014)	No publication date confirmed
Physical activity among adults	Sport England (Active Lives Survey) 2018	Irregular (published December 2018)	No publication date confirmed
Index of Access to Health Assets and Hazards (AHAH)	2016	No update planned (published 2017)	No plans to update
Qualifications by level	Census 2011	10 yearly (published August 2013)	2023
Participation in Higher Education	Office for Students (OFS)	Irregular	No publication date confirmed
Early years foundation stage profile	DfE 2013-2014	Annually (published June 2015)	Delay in publication
Pupil attainment at Key Stage 1, Key Stage 2 and Key Stage 4	DfE 2013-2014	Annually (published June 2015)	Delay in publication
Annual household income	ONS 2015/16	Irregular (published April 2018)	Apr-19
Annual household income, after housing costs	ONS 2015/16	Irregular (published April 2018)	Apr-19
Households living in ‘Fuel Poverty’	Department for Energy and Climate Change (2016)	Annually (published July 2018)	Apr-19
Debt	UK Finance (Sept-2018)	Bianually (published April 2019)	Oct-19
Economic activity by type	Census 2011	10 yearly (published August 2013)	2023
Employment type by sector	Census 2011	10 yearly (published August 2013)	2023
Job centre vacancies	ONS/Jobcentre Plus (Nov-12)	Irregular (published December 2012)	No publication date confirmed
Jobs by sector	Business Register and Employment Survey (BRES) (2017)	Annually (published 2018)	Oct-19
Business VAT based local units by sector and size	ONS 2017	Annually (published August 2018)	Sep-19
Car ownership by number	Census 2011	10 yearly (published August 2013)	2023
Road distances to key services by type	Commission for Rural Communities: Distance to Service dataset (2010)	Irregular (published 2011)	No publication date confirmed
Average travel time (mins) by walking or public transport to the nearest key service	DfT 2016	Annually (published July 2018)	Aug-19
Broadband speed	Ofcom 2017	Annually (published December 2017)	Jan-19
Census online and paper responses	Census 2011	10 yearly (published August 2013)	2023
Area classifications by type	ONS Output Area Classification 2011	10 yearly (published July 2014)	No publication date confirmed
Internet User Classification	Consumer Data Research Centre	Annually (published 2018)	2019
Indicators of community strength and civic engagement	Place Survey (2008)	Irregular (published June 2009)	No publication date confirmed
Active charities	National Council for Voluntary Organisations (NCVO) (2009)	Irregular (published 2009)	No publication date confirmed
Community Dynamic scores for belonging, relationships and satisfaction	Social Life (modelled from the annual Community Life Survey), 2015/2016	Irregular	No plans to update
Air pollution concentrations for four pollutants	CLG, Indices of Deprivation 2015 - from National Air Quality Archive 2012	Irregular (September 2015)	2019
Greenspaces and parks	OS data © Crown copyright and database right 2017	Irregular (published May 2017)	No publication date confirmed
Big Lottery funding	Big Lottery, 360Giving, 2004-2015	Irregular	No publication date confirmed



Local Insight gives you the data and analysis you need to ensure your services are underpinned by the best possible knowledge of local communities, leveraging the power of information right across your organisation, from high-level visualisations for Board level to detailed reports on local neighbourhoods. Saving you time and money, Local Insight gives you the most relevant and up-to-date data on the communities where you work, with no need to invest in specialist mapping and data staff, consultancy or software. See <http://local.communityinsight.org/> for more information.

Local Insight is developed by OCSI, based on a project that was jointly developed by HACT and OCSI.



OCSI work with public and community sector organisations to improve services. We turn complex datasets into engaging stories; making data, information and analysis accessible for communities and decision-makers. See www.ocsi.co.uk for more information.